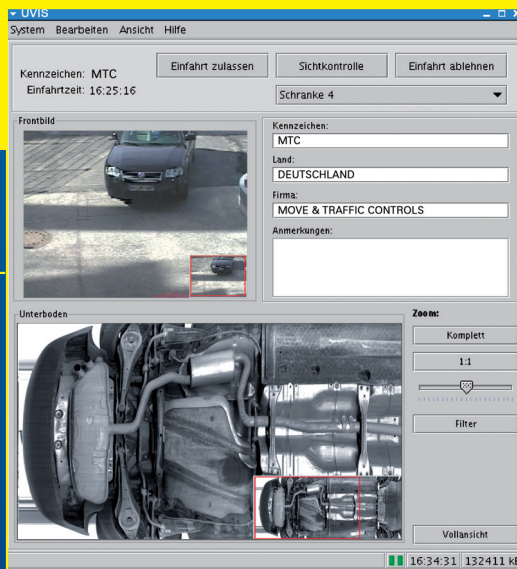


## Under Vehicle Inspection System

It is probably not without reason that East-Berliners developed this genius under vehicle control system. The system allows for checking vehicles driving at speed up to 40 km/hour.



*Picture is formed in a computer by compiling a lot of information lines all put together.*



*By a simple mouse-click you can zoom in and out in the photos shot.*

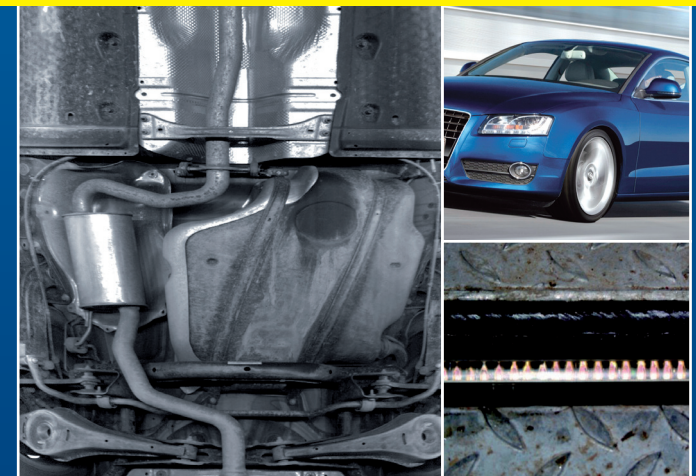
Move & Traffic Controls



Move & Traffic Controls



## UVIS | Under Vehicle Inspection System



### Move & Traffic Controls GmbH

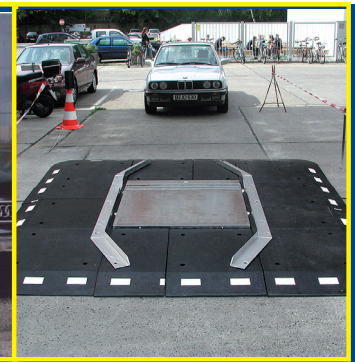
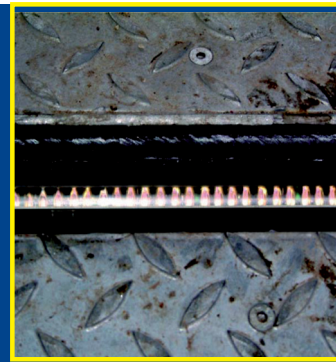
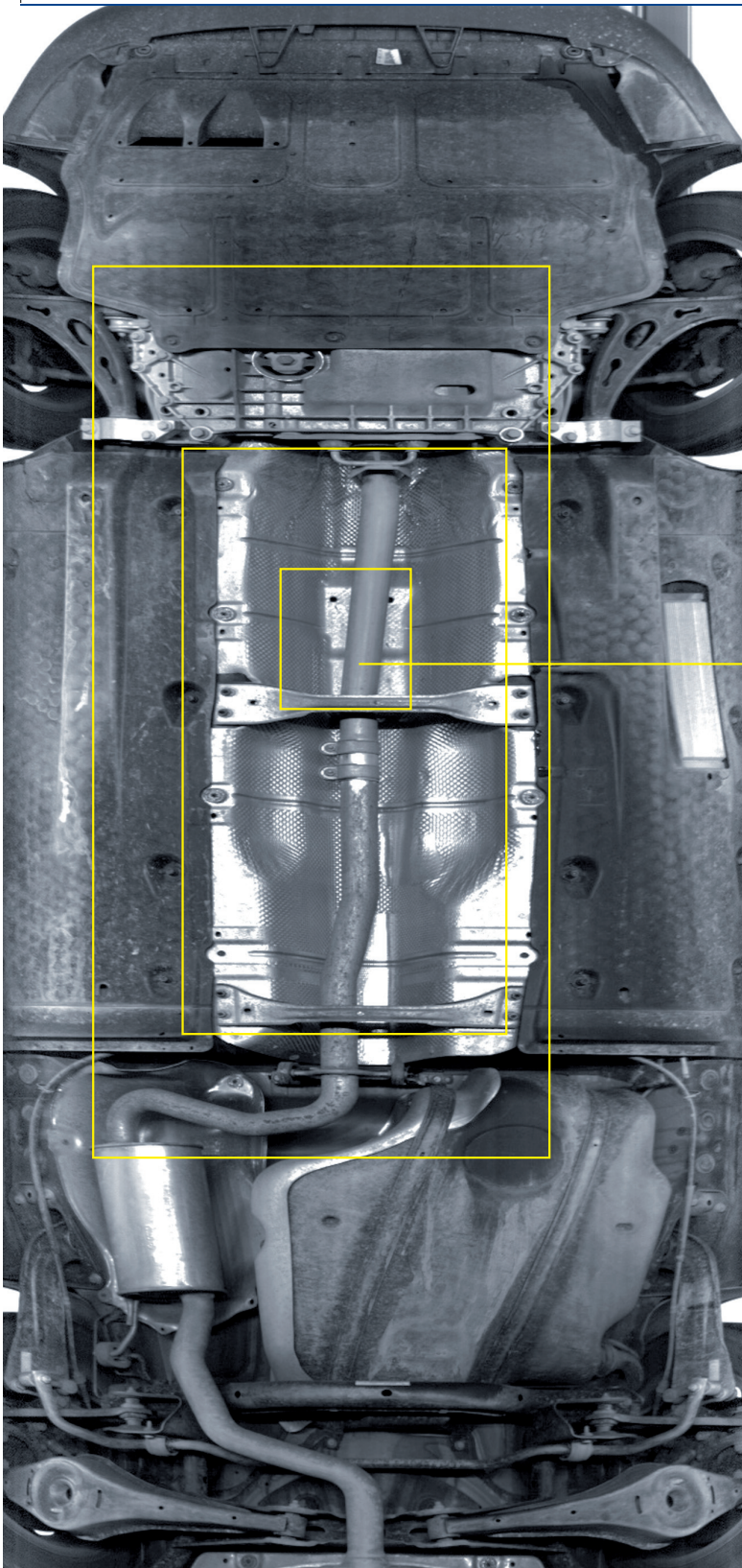
Bouchéstraße 12, Haus 1  
12435 Berlin, Germany

Phone +49 (0)30 53 31 14 -70  
Fax +49 (0)30 53 31 14 -80  
E-Mail [info@mtcontrols.de](mailto:info@mtcontrols.de)

[www.mtcontrols.de](http://www.mtcontrols.de)

→ moving safely





*System is available as a fix or a mobile one.*

The system consists of a control pc and a scanner unit, which contains one or more cameras. These have a free sight to the under body of the vehicle via a special mirror, positioned in angle in an aim to save installation height.

Beside the mirror a huge amount of infrared diodes are mounted with an aim to enlighten the under part of the vehicle when passing by.

Two cables leads from the scanner to the control PC, which processes and stores all taken pictures. The pictures may be examined on the PC's monitor. The PC's memory is able to store up to 10000 pictures in the standard configuration.

In a stage of extension of the system, an automatic comparison of two under body pictures of the same car will be possible.

The recognition of the car will be made by reading the license plate automatically.

### Performance characteristics

- Optical safety inspection system to prevent threat of car bombs
- Speedy control of multiple cars and vehicles
- Scans all objects up to 2,8 m width and 19 m length
- Distance to under body may vary from 1 to 60 cm
- Vehicle speed from 1 to 40 km/h
- Optionally the system may be equipped with a washer/wiper system
- May be delivered in a fixed installation or mobile version
- Compact outline dimensions for the mobile version: 100x100 cm, height only 9 cm
- Also available as a two scanner version for e. g. prison gates

### Example of System Concept

