

Description

Single pole high performance thermal-magnetic circuit breaker with tease-free, trip-free, snap action mechanism and toggle actuation (S-type TM CBE to EN 60934). Options include auxiliary contacts, a moulded flame retardant enclosure for added environmental protection, and remote operation - disconnection only, or disconnection and re-connection. Now also available in an IP65 housing (see E-1032, page 269).

Typical applications

Battery and cable protection for all types of vehicles (including rail vehicles and boats), battery powered systems.

Ordering information

Type No.

437 single pole, toggle actuator (2-pole upon request)

Enclosure design (optional)

- B3** moulded, high environmental protection degree, without operating knob
- B31** moulded, high environmental protection degree, with operating knob
- B35** as B31, but for remote disconnection and re-connection facility
- C3** housing without operating knob, single pole, IP65

Terminal design

- K12** flat screw terminals M10, for enclosure B3, B31 or B35
- K60** flat screw terminals DIN 46206, sheet 2, form 1, thread M10
- K71** compulsory and only for C3 housing

Mounting

- 1** lugs
- 2** compulsory and only for C3 housing
- 5** brackets

Characteristic curve

- 06** fast trip
- 07** delayed trip

Auxiliary contacts (blade terminals 6.3x08)

- Si** one each N/O and N/C
- Si01** one N/C (11/12), two N/O (13/14 + 23/24)
- Si2** one N/O (13/14)
- 2Si2** two N/O

Remote trip (optional)

- FA** electrical remote disconnection
- FC** electrical remote disconnection (FA) and re-connection (FE)
- BC-FA** electrical remote disconnection (FA) and manual/remote re-connection not for enclosure B and C

Coil voltage

- 12** DC 12 V
- 24** DC 24 V
- (higher voltage ratings upon request)

Current ratings

40...240 A

Voltage ratings

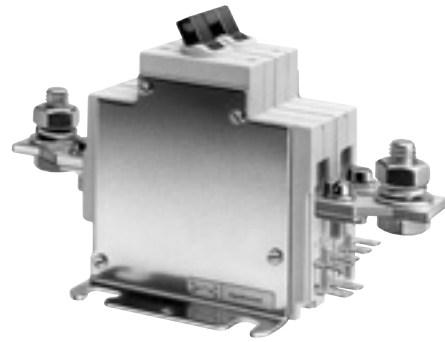
- (blank)** ≤ DC 110 V
- B** > DC 110 V

437 - ... - K60 - 5 - 06 - 2Si2 - FA 24 - 50A - ... ordering example

The exact part number required can be built up from the table of choices shown above. Ordering references for optional features should be omitted if not required.

Standard current ratings and typical internal resistance values

Current rating (A)	Internal resistance (Ω)	Current rating (A)	Internal resistance (Ω)
40	< 0.003	120	≤ 0.002
50	< 0.002	160	≤ 0.001
63	≤ 0.002	200	≤ 0.001
80	≤ 0.002	240	≤ 0.001
100	≤ 0.002		



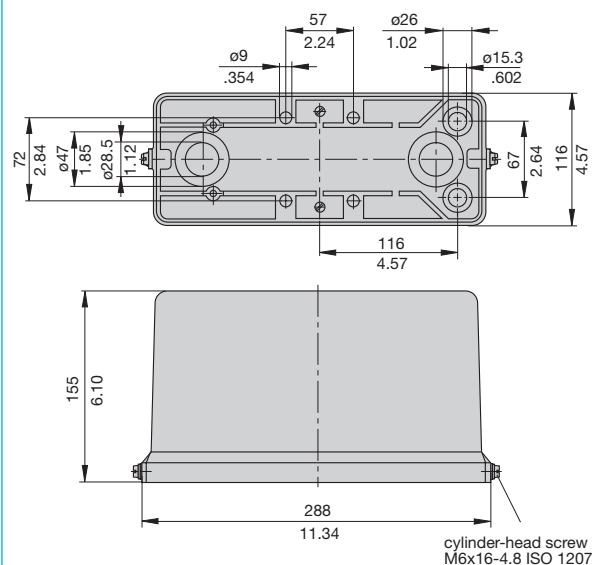
437-...

Technical data

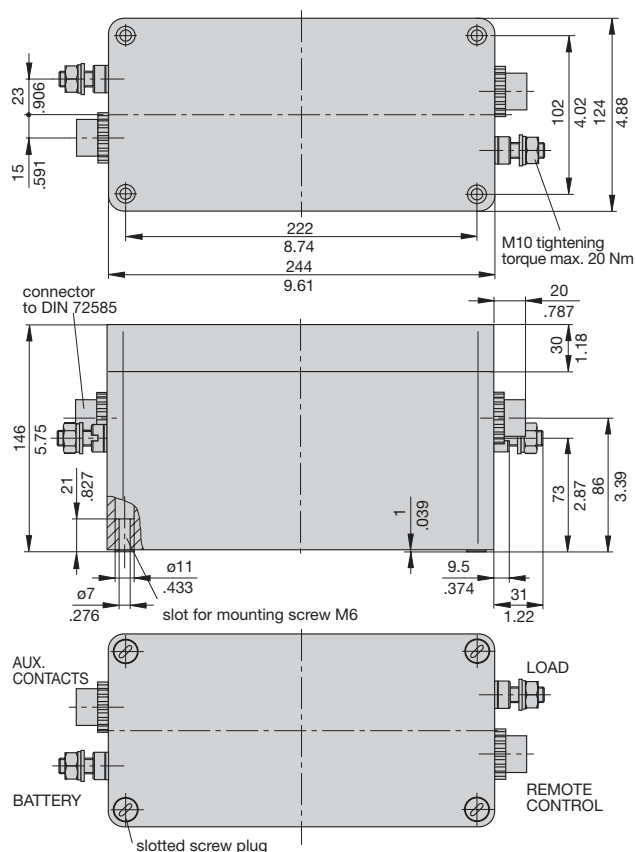
Voltage rating	DC 144 V (higher voltage ratings upon request)	
Current rating range	40...240 A (higher current ratings upon request)	
Auxiliary contact rating	6 A max. at DC 28 V 0.2 A at DC 180 V	
Electrical remote disconnection (-FA)	operating voltage DC 12 V or DC 24 V operating current approx. 18 A or 12 A max. pulse time 10 ms < t _{ON} < 20 ms / t _{OFF} > 10 s switching time < 20 ms	
Electrical remote re-connection (-FC)	operating voltage DC 12 V or DC 24 V operating current approx. 30 A or 15 A max. pulse time 0.1 s < t _{ON} < 1.2 s / t _{OFF} > 60 s switching time < 100 ms	
Typical life	3,000 operations at 240 A, DC 180 V 10,000 operations at 240 A, DC 28 V 20,000 operations mechanical	
Ambient temperature	-40...+60 °C (-40...+140 °F)	
Insulation co-ordination (IEC 60664 and 60664 A)	rated impulse withstand voltage 6 kV	pollution degree 3
Dielectric strength (IEC 60664 and 60664 A)	test voltage operating area AC 3,300 V main to aux. circuit AC 2,200 V aux. circuits 11-12 to 13-14 AC 1,000 V	
Insulation resistance	> 100 MΩ (DC 500 V)	
Interrupting capacity I _{cn}	2,000 A at DC 180 V; L/R = 0 ms 10,000 A at DC 28 V; L/R = 0 ms 7,500 A at DC 28 V; L/R = 13 ms	
Degree of protection (IEC 60529/DIN 40050)	operating area IP40, terminal area IP00 with enclosure B IP54 with enclosure C IP65	
Vibration	curve 06: 3 g (60-500 Hz), ± 0.23 mm (10-60 Hz) curve 07: 4 g (60-500 Hz), ± 0.30 mm (10-60 Hz) to IEC 60068-2-6, test Fc, 10 frequency cycles/axis	
Shock	curve 06: 20 g (11 ms), to IEC 60068-2-27, test Ea curve 07: 25 g (11 ms), to IEC 60068-2-27, test Ea	
Corrosion	48 hours at 5 % salt mist, to IEC 60068-2-11, test Ka	
Humidity	240 hours at 95 % RH, to IEC 60068-2-3, test Ca	
Mass	approx. 900 g base unit + approx. 400 g remote disconnection + approx. 100 g remote re-connection + approx. 750 g B housing + approx. 1,000 g C housing	

Dimensions

Moulded enclosure IP54 -B3



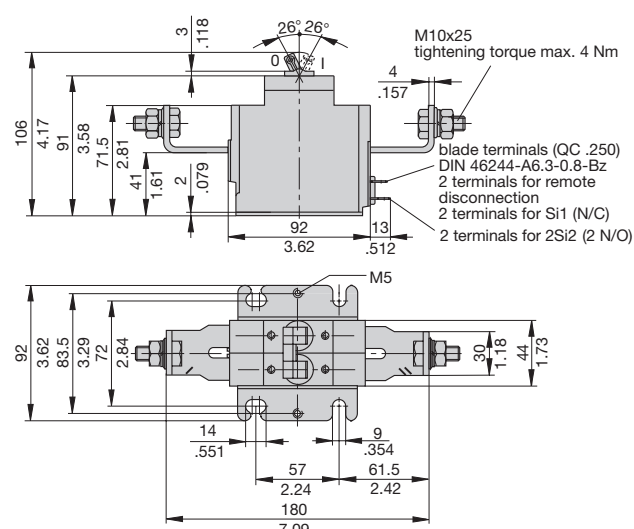
Moulded enclosure IP65 -C3



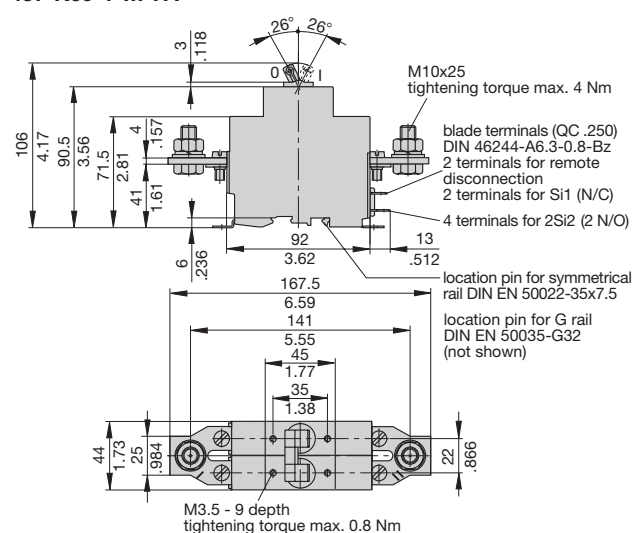
This is a metric design and millimeter dimensions take precedence ($\frac{\text{mm}}{\text{inch}}$)

Dimensions

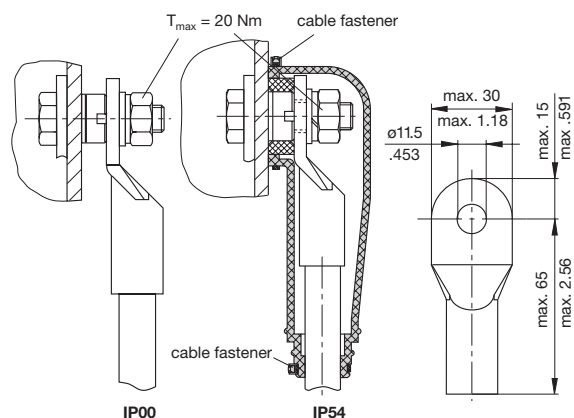
437-K12-5-Si-...-FA



437-K60-1-...-FA



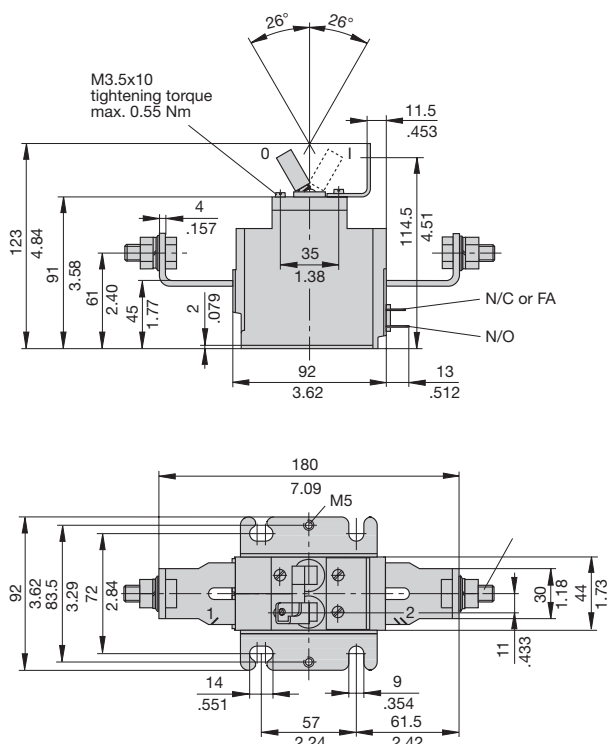
Terminals with housing C3



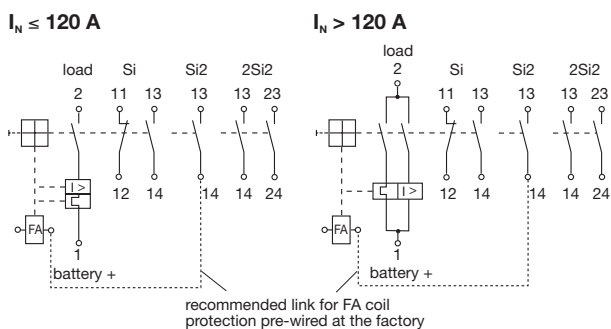
Rubber caps and cable fasteners are supplied with the product.

Dimensions

437-K12-...-BC-FA..



Internal connection diagram



for housing C3

