

Description

Miniaturised single pole thermal circuit breaker with push-to-reset tease free, trip-free, snap action mechanism (R-type TO CBE to EN 60934). Available in versions for PCB or panel mounting, snap-in or threadneck, or as an integral type. Manual release facility optional for type 105. Approved to CBE standard EN 60934 (IEC 60934). For higher current ratings see type 1140.

Typical applications

Motors, transformers, solenoids, printed circuit boards, hand-held machines and appliances, marine applications, caravans.

Ordering information

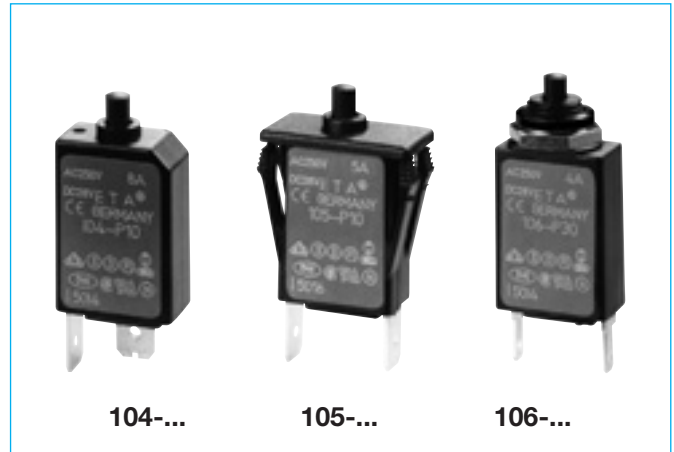
| Type No. | |
|--|---|
| 104 | PCB mounting type (-PR), or integral type (-P30/P10) |
| 105 | snap-in panel mounting |
| 106 | threadneck panel mounting with hex and knurled nut* |
| 106-M2 | threadneck panel mounting 3/8-27UNS with collar, hex nut and knurled nut* |
| Terminal design | |
| P10 | blade terminals A6.3-0.8 (QC .250) |
| P30 | blade terminals A2.8-0.8 (QC .110) |
| PR | solder terminal pins for PCB mounting (type 104 only) |
| PR2 | PCB mounting (vertical), type 104 only up to 6 A |
| PR3 | PCB mounting (vertical), type 104 only |
| Shunt terminal (optional) | |
| A3 | same as main terminals (up to I_N 6 A/3 A max. load) |
| Manual release facility (optional) | |
| H | only with type 105 |
| Auxiliary contacts (optional) | |
| Si51 | type 104 only |
| Current ratings | |
| 0.05...10 A | |
| 106 - P30 - .. - .. - 5 A = ordering example | |

The exact part number required can be built up from the table of choices shown above. Ordering references for optional features should be omitted if not required.

* mounting hardware bulk shipped

Standard current ratings and typical internal resistance values

| Current rating (A) | Internal resistance (Ω) | Current rating (A) | Internal resistance (Ω) |
|--------------------|----------------------------------|--------------------|----------------------------------|
| 0.05 | 285 | 1.8 | 0.28 |
| 0.08 | 134 | 2 | 0.25 |
| 0.1 | 81 | 2.5 | 0.18 |
| 0.2 | 22 | 3 | 0.11 |
| 0.3 | 8.7 | 3.5 | 0.076 |
| 0.4 | 5.5 | 4 | 0.067 |
| 0.5 | 3.3 | 4.5 | 0.051 |
| 0.6 | 2.45 | 5 | ≤ 0.05 |
| 0.7 | 1.6 | 6 | ≤ 0.05 |
| 0.8 | 1.45 | 7 | ≤ 0.05 |
| 1 | 0.9 | 8 | ≤ 0.05 |
| 1.2 | 0.6 | 10 | ≤ 0.05 |
| 1.5 | 0.4 | | |



Technical data

For further details please see chapter: Technical Information

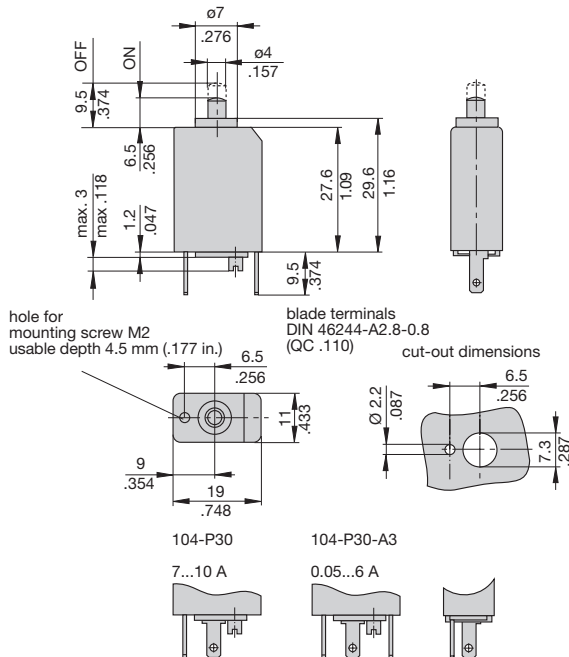
| | | | |
|---|--|--|---------|
| Voltage rating | AC 240 V; DC 48 V (UL: AC 250 V; DC 48 V) | | |
| Current ratings | 0.05...10 A | | |
| Auxiliary circuit | 0.5 A, AC 240 V, DC 28 V | | |
| Typical life | | | |
| AC 240 V | 0.05...8 A | 2,000 operations at 1 x I _N , inductive | |
| | 0.05...5 A | 3,000 operations at 2 x I _N , inductive | |
| | 6...8 A: | 500 operations at 2 x I _N , inductive | |
| DC 48 V | 0.05...8 A | 2,000 operations at 1 x I _N , inductive | |
| | 0.05...5 A | 3,000 operations at 2 x I _N , inductive | |
| | 6...8 A: | 500 operations at 2 x I _N , inductive | |
| | 10 A | 200 operations at 1 x I _N , inductive | |
| | 10 A | 50 operations at 2 x I _N , inductive | |
| Ambient temperature | -20...+60 °C (-4...+140 °F) T 60 | | |
| Insulation co-ordination (IEC 60664 and 60664 A) | rated impulse withstand voltage | pollution degree | |
| | 2.5 kV | 2 | |
| | reinforced insulation in operating area | | |
| Dielectric strength (IEC 60664 and 60664A) | test voltage | | |
| operating area | AC 3,000 V | | |
| Insulation resistance | > 100 MΩ (DC 500 V) | | |
| Interrupting capacity I _{cn} | 0.05...8 A | 6 x I _N AC | |
| | > 8...10 A | 5 x I _N AC | |
| | 0.05...10 A | 6 x I _N DC | |
| Interrupting capacity (UL 1077) | I _N | U _N | |
| | 0.05...10 A | AC 250 V | 2,000 A |
| | 0.05...10 A | DC 48 V | 200 A |
| Degree of protection (IEC 60529/DIN 40050) | operating area IP40 terminal area IP00 | | |
| Vibration | 10 g (57-500 Hz) ± 0.76 mm (10-57 Hz), to IEC 60068-2-6, test Fc, 10 frequency cycles/axis | | |
| Shock | 25 g (11 ms) to IEC 60068-2-27, test Ea | | |
| Corrosion | 96 hours at 5 % salt mist, to IEC 60068-2-11, test Ka | | |
| Humidity | 240 hours at 95 % RH, to IEC 60068-2-3, test Ca | | |
| Mass | approx. 10 g | | |

Approvals

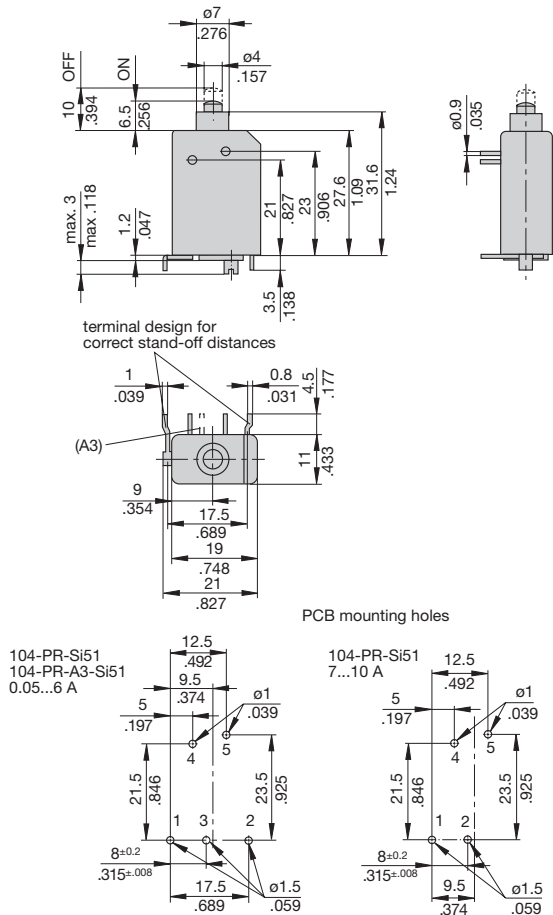
| Authority | Voltage ratings | Current ratings |
|--|-------------------|-----------------|
| VDE, SEV, Kema (EN 60934) | AC 240 V | 0.05...8 A |
| | DC 48 V | 0.05...10 A |
| CSA, UL | AC 250 V; DC 48 V | 0.05...10 A |
| Circuit breakers with -Si51 not approved | | |

Dimensions

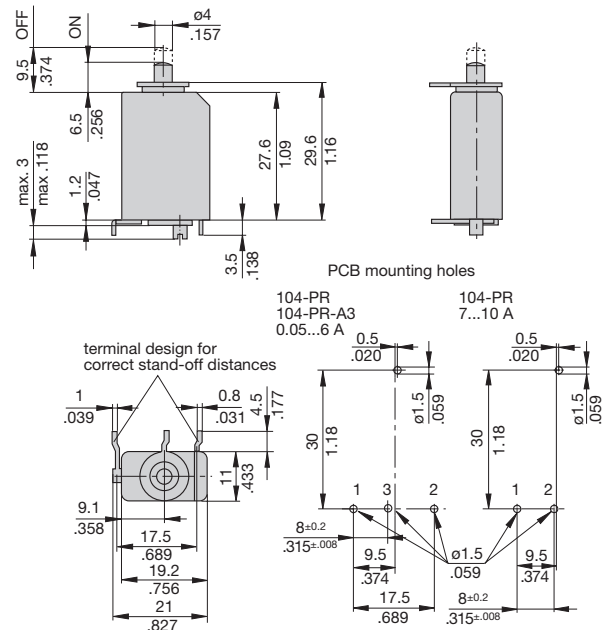
104-P30



104-PR-(A3)-Si51

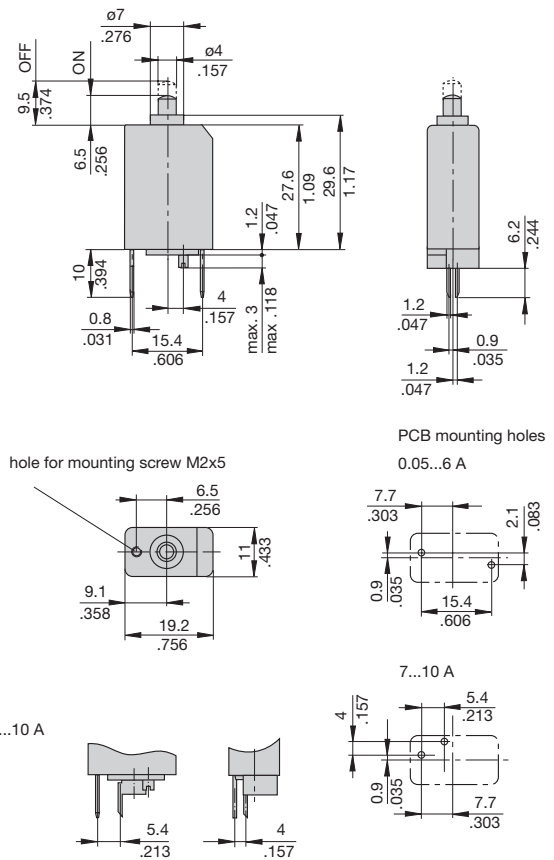


104-PR



104-PR3

0.05...6 A



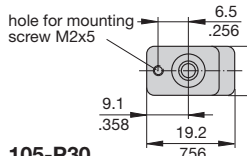
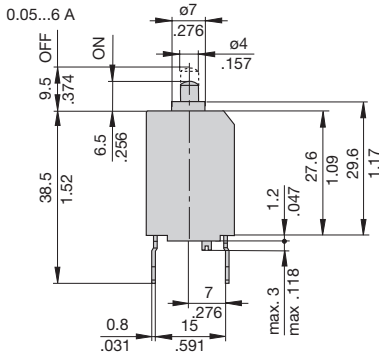
This is a metric design and millimeter dimensions take precedence (mm/inch)

Dimensions

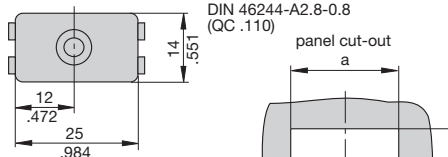
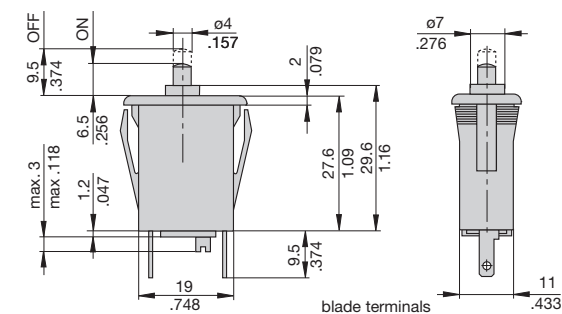
1

104-PR2

0.05...6 A



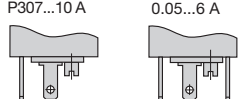
105-P30



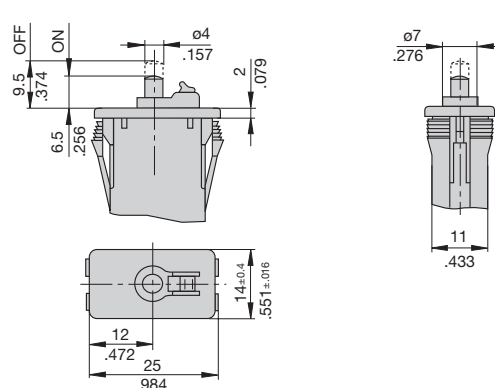
| d | a | b |
|-----|-----------|-----------|
| mm | inch | mm |
| 0.8 | .031 | 21.9 .862 |
| 1.0 | .039 | 22 .866 |
| 1.5 | .059 | 22.1 .870 |
| 2-3 | .079-.118 | 22.2 .874 |

105-P307...10 A

105-P30-A3 0.05...6 A

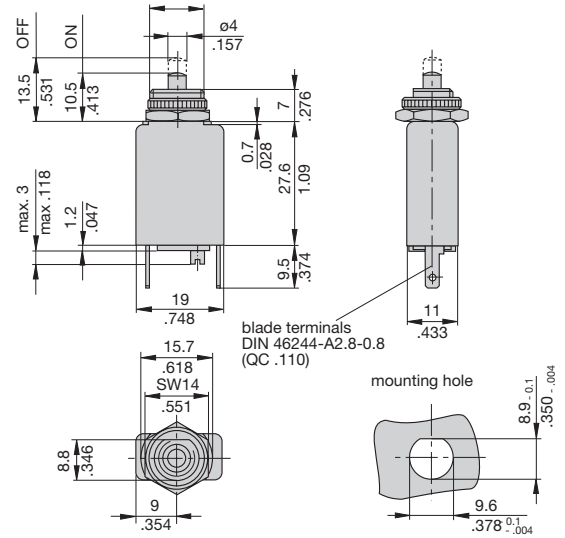


105-P.-H



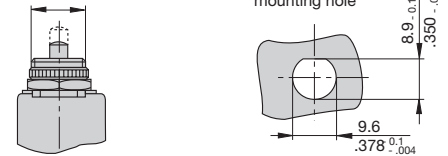
106-P30

3/8-27UNS-2A
tightening torque max. 0.8 Nm



106-M2

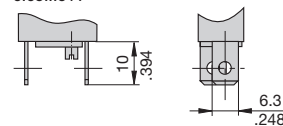
3/8-27UNS-2A
tightening torque max. 0.8 Nm



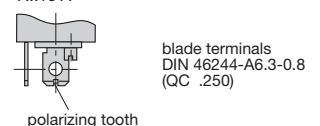
Terminal design

104/105/106-P10

0.05...6 A

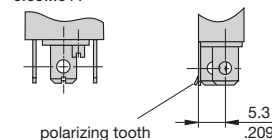


7...10 A



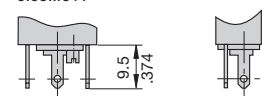
104/105/106-P10-A3

0.05...6 A



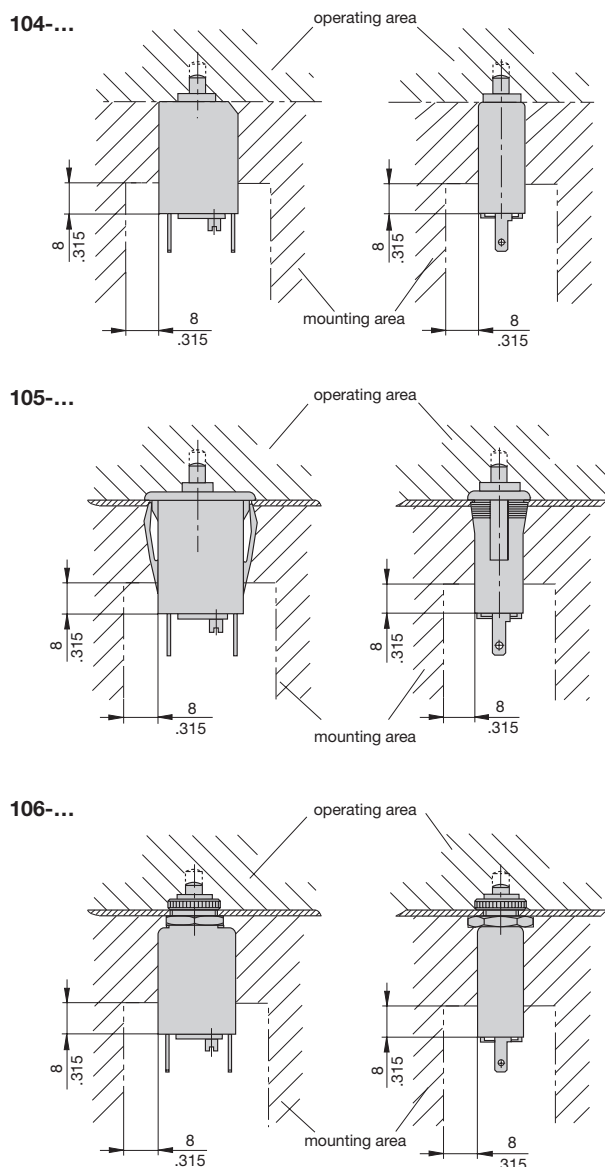
104/105/106-P30-A3

0.05...6 A

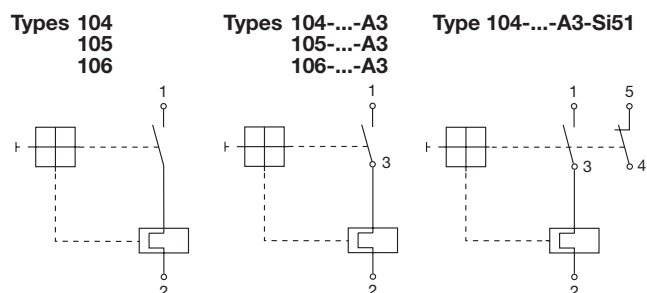


This is a metric design and millimeter dimensions take precedence (mm/inch)

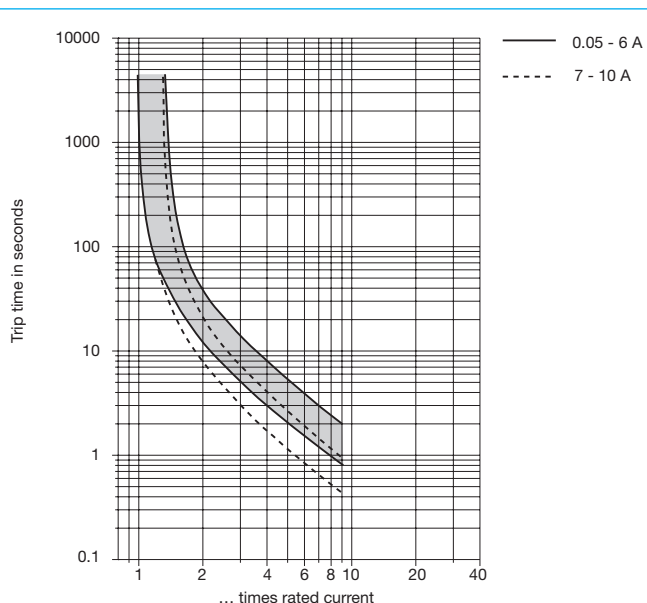
Installation drawings



Internal connection diagrams



Typical time/current characteristics at +23 °C/+73.4 °F

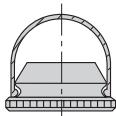


The time/current characteristic curve depends on the ambient temperature prevailing. In order to eliminate nuisance tripping, please multiply the circuit breaker current ratings by the derating factor shown below. See also section 9 – Technical information.

| | | | | | | | |
|------------------------|------|------|------|-------|------|------|------|
| Ambient temperature °F | -4 | +14 | +32 | +73.4 | +104 | +122 | +140 |
| °C | -20 | -10 | 0 | +23 | +40 | +50 | +60 |
| Derating factor | 0.76 | 0.84 | 0.92 | 1 | 1.08 | 1.16 | 1.24 |

Accessories

Water splash cover (transparent)/knurled nut assembly
(type 106-... only)
X 201 285 01
Degree of protection IP64



This is a metric design and millimeter dimensions take precedence ($\frac{\text{mm}}{\text{inch}}$)

All dimensions without tolerances are for reference only. In the interest of improved design, performance and cost effectiveness the right to make changes in these specifications without notice is reserved. Product markings may not be exactly as the ordering codes. Errors and omissions excepted.