

BLOWERS

EFFICIENT, LOW-NOISE, POWERFUL



AURORA
Power & Fluid Control & Co. Ltd.

SRG 1000

Model no. AURORA A: 101-001-0010
Model no. AURORA B: 101-001-0011

MAX. ELECTRIC SUPPLY: 200 V/50 Hz

Output capacity: 24 m³

Power: 1.2 kW
Voltage: 230 V/50 Hz
Frequency: 50 Hz

For further information
contact your nearest
Aurora representative
or call our service
hotline number

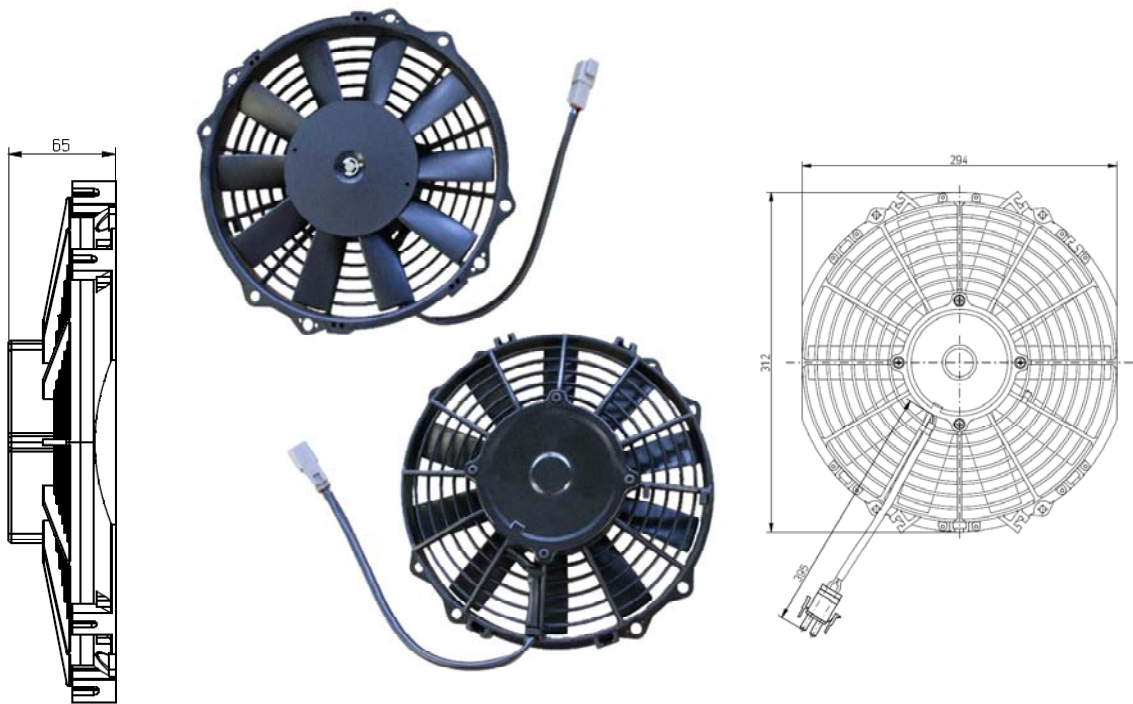
Blowers Axial

Aurora’s Axial Fans come in several different sizes and mounting options in order to ensure the correct fit. These fans are powerful, durable, and lightweight. They are ideal for use as roof vents, condenser fans, oil coolers, and several other applications where maximum airflow is essential. Additional options include resistors for multiple speeds.

Technical Information

912-100-0617 / 912-100-0948
912-100-0482 / 912-100-0751
912-100-0754

Variations	
Part Number	Description Dimension Performance Max.
134-801-0008	12 V / 8" / suction 210 x 5260 mm 805
134-802-0008	24 V / 8" / suction 210 x 5260 mm 805
134-801-0010	12 V / 9" / suction 2478x 526 mm 1060
134-802-0011	24 V / 9" / suction 2478 x 526 mm 1090
134-801-0009	12 V / 10" / blowing 285 x 525 mm 1325
134-801-0043	12 V / 10" / suction 285 x 525 mm 1480
134-801-0004	12 V / 11" / blowing 310 2x 524 mm 1530
134-802-0004	24 V / 11" / blowing 310 2x 524 mm 1580
134-801-0030	12 V / 12" / suction 335 x 62 mm 2250
134-802-0012	12 V / 16" / suction 416 x 704 mm 2820
134-802-0017	24 V / 16" / blowing 416 x 70 4mm 2820



Blowers Axial EC

EC is infinitely adjustable to satisfy high comfort standards with a high lifetime performance of about 25.000 operation hours. The axial fan has a high degree of efficiency, a low noise emission and fulfil highest EMC requirements. Implementation for motor cooling, ventilation, in condenser unit and in unit with low pressure loss.

Technical Information

912-100-0377

Variations	
Part Number	Description Airflow free blowing [m³/hr.] Electrical Input Power [W] Speed [1/min] / Sound [dB(A)] / Weight [kg]
Temperature Range -40 ... +85° C	
134-902-0006	24V Ø303mm brushless 2400 200 3100 / 72 / 2.45
134-902-0008	24 V Ø330mm brushless 3130 335 3320 / 87 / 2.5
Temperature Range -20 ... +60° C	
134-802-0020	24 V 92x92mm brushless 115 4 3600 / 46 / 0.14



Blowers RG120

Aurora’s Radial Blowers are built with powerful electric motors for high efficiency throughout a long lifetime of performance. The blowers have a high proportion of air flow vs. system resistance. All models have flange seals made out of cellular rubber. All this and more left unmentioned makes the *RG120* a electric motor with excellent durability.

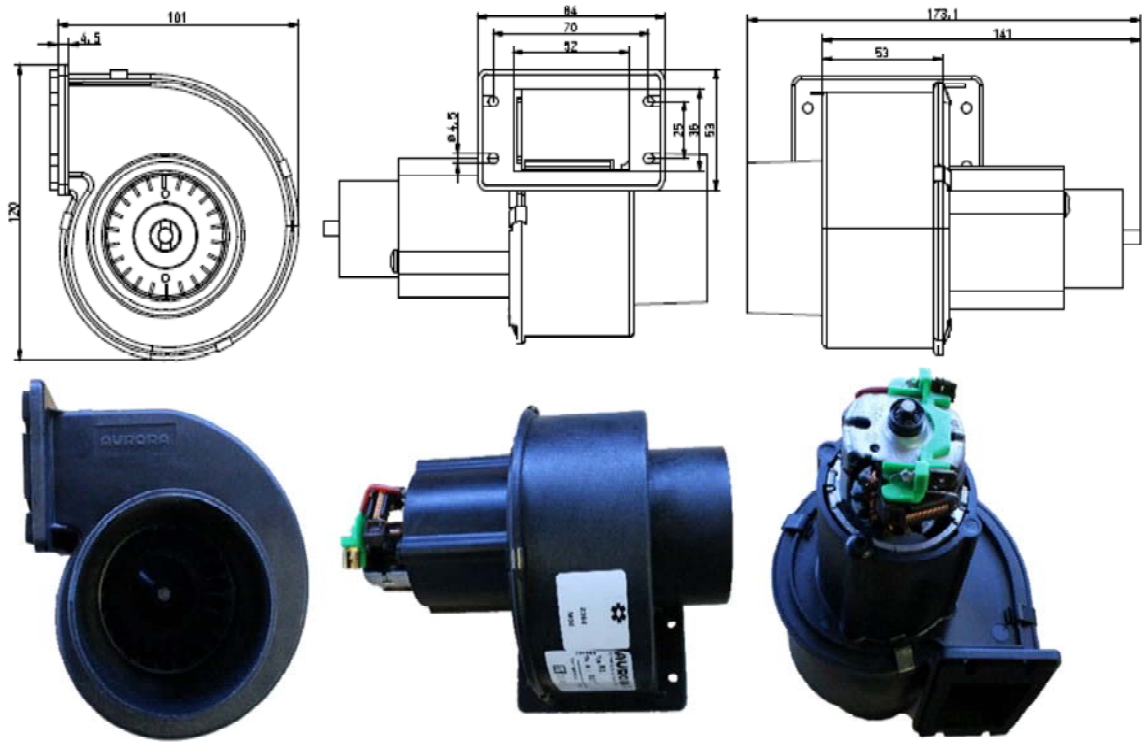
Specifications

Housing: 35% glass fiber polyamide PA6
Airflow: 120 m³/h (70 cfm)
Nominal voltage: 12 or 24 Volt
Weight: ~0.5 kg (1.1 lbs.)
Pel: 55W
Lp: 66dB(A)

Technical Information

912-100-0583

Variations	
Part Number	Description
132-121-0000	12V Standard
132-121-0001	12V Standard w/ Adaptor Ø 65
132-122-0000	24V Standard
132-122-0001	24V Standard w/ Adaptor Ø65



Blowers RG300

Aurora's *RG300* has a compact design with high power density resulting in maximum efficiency with minimal dimensions. Our family of Radial Blowers are built with a powerful electro motor to boost high efficiency over a long lifetime of performance. Aurora's Blowers contain a high proportion of air flow versus system resistance. All radial blowers have flange seals made out of cellular rubber.

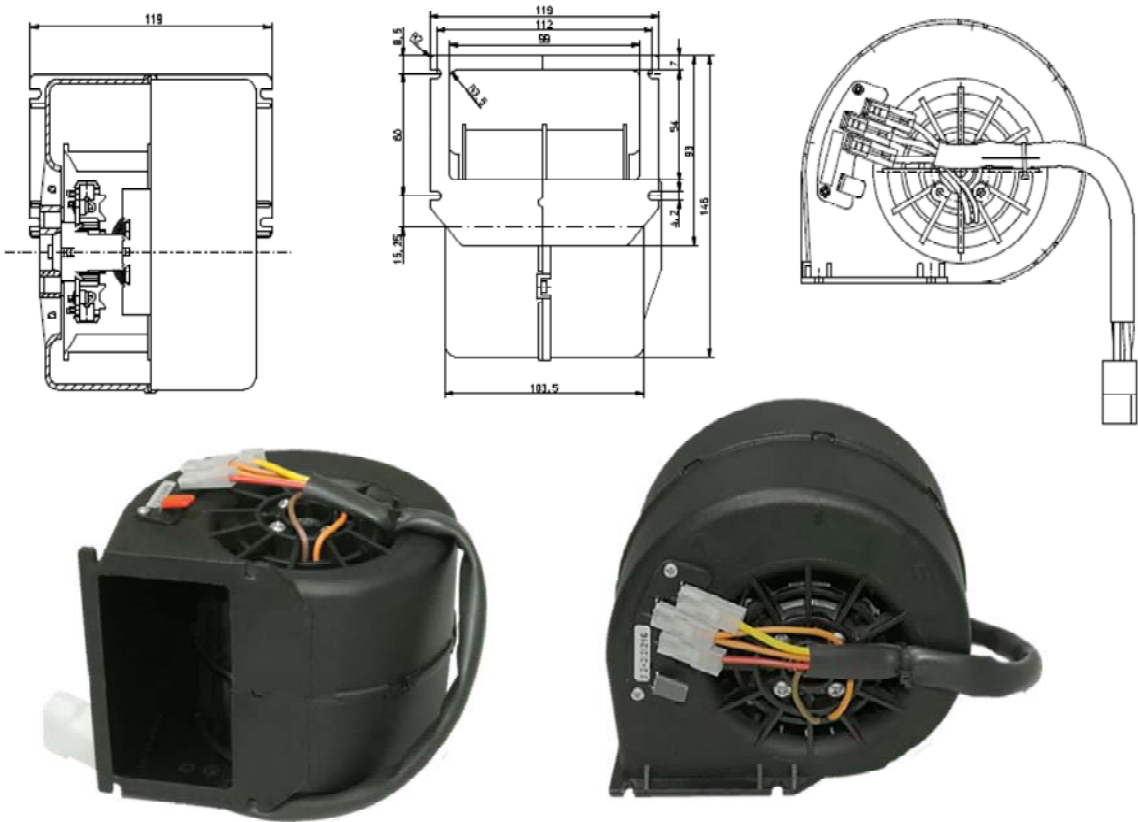
Specifications

Housing: 35% glass fiber polyamide PA6
Airflow: 325 m³/h (191 cfm)
Nominal voltage: 12 or 24 Volt
Weight: ~ 0.87 kg (1.92 lbs.)
Pel: 130 W
Lp: 67 dB (A)

Technical Information

913-300-0004

Variations	
Part Number	Description
132-901-0010	12V - 3 Speed
132-902-0010	24V - 3 Speed



Blowers RG550

Aurora’s Radial Blowers are built with powerful electric motors for high efficiency throughout a long lifetime of performance. These blowers feature a high proportion of air flow vs. system resistance. All radial blowers have flange seals made out of cellular rubber. Our family of Radial Blowers are built with a powerful electro motor to boost high efficiency over a long lifetime of performance.

Specifications

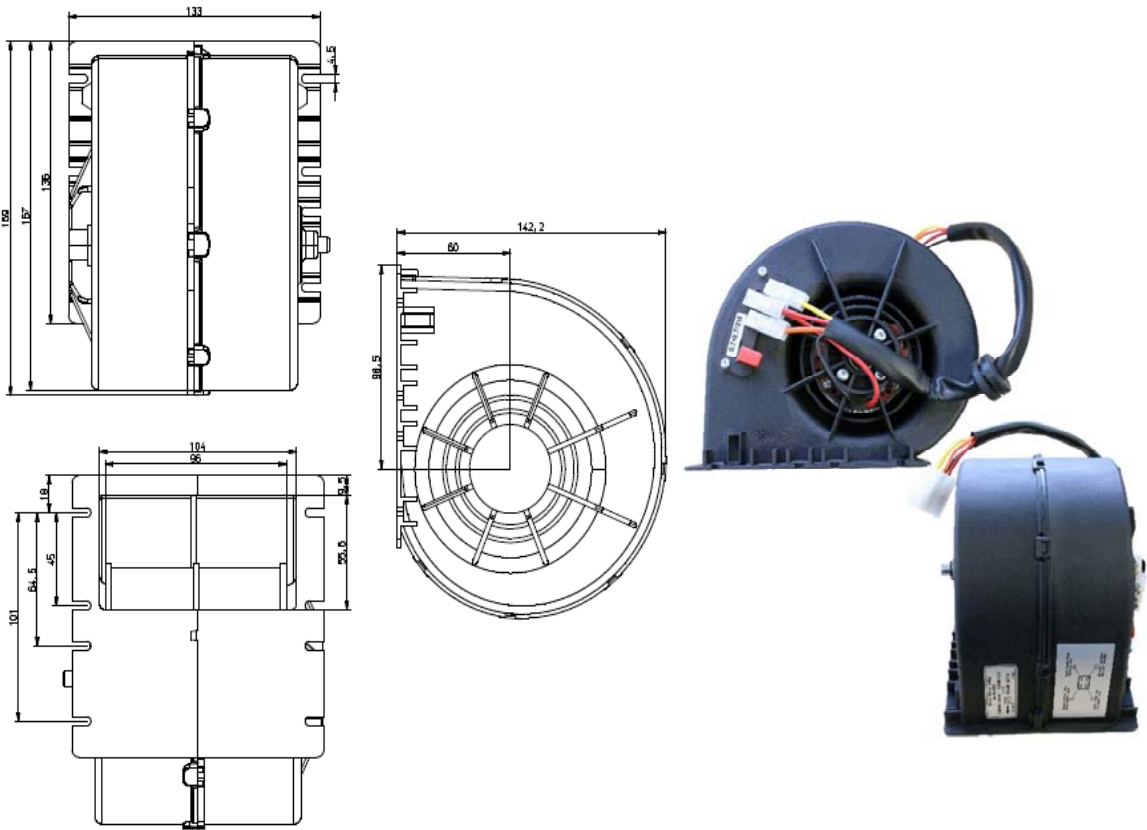
Housing: 35% glass fiber polyamide PA6
Airflow: 500 m³/h (294 cfm)
Nominal voltage: 12 or 24 Volt
Weight: ~1.27 kg (2.8 lbs.)
Pel: 210 W
Lp: 75.5 dB (A)

Technical Information

912-100-0674

Variations

Part Number	Description
132-901-0004	12V - 3 Speed
132-902-0004	24V - 3 Speed



Blowers RG780

Aurora’s Radial Blowers are built with powerful electric motors for high efficiency throughout a long lifetime of performance. These blowers feature a high proportion of air flow vs. system resistance. All radial blowers have flange seals made out of cellular rubber. Our family of Radial Blowers are built with a powerful electro motor to boost high efficiency over a long lifetime of performance.

Specifications

Housing: 35% glass fiber polyamide PA6
Airflow: 780 m³/h (459 cfm)
Nominal voltage: 12 or 24 Volt
Weight: ~2 kg (4.41 lbs.)

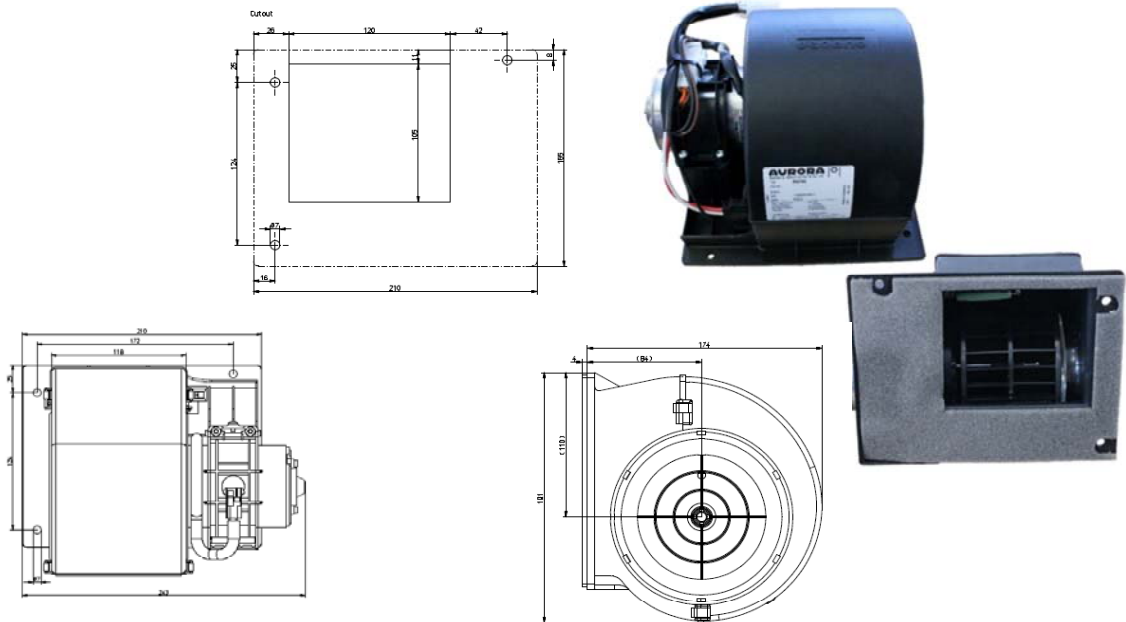
Technical Information

912-100-0579

Variations

Part Number	Description
132-901-0400	12V - Standard
132-901-0405	12V - 4 Speed
132-902-0400	24V - Standard
132-902-0405	24V - 4 Speed

	Speed 1	Speed 2	Speed 3	Speed 4
V air m³/h.	300	410	530	780
Pel in W	70	110	160	280
Lp in dB (A)	57	65	71	77



Blowers DRG370

Aurora's Double Radial Blower (DRG) design incorporates high performance, low noise, and long life. The compact *DRG370* design produces 370 m³/h of airflow and utilizes longer brushes and internal resistors extending the life of the blowers. Blower speeds are regulated via a series resistor thanks to ceramic heat sink and micro-temperature-fusing.

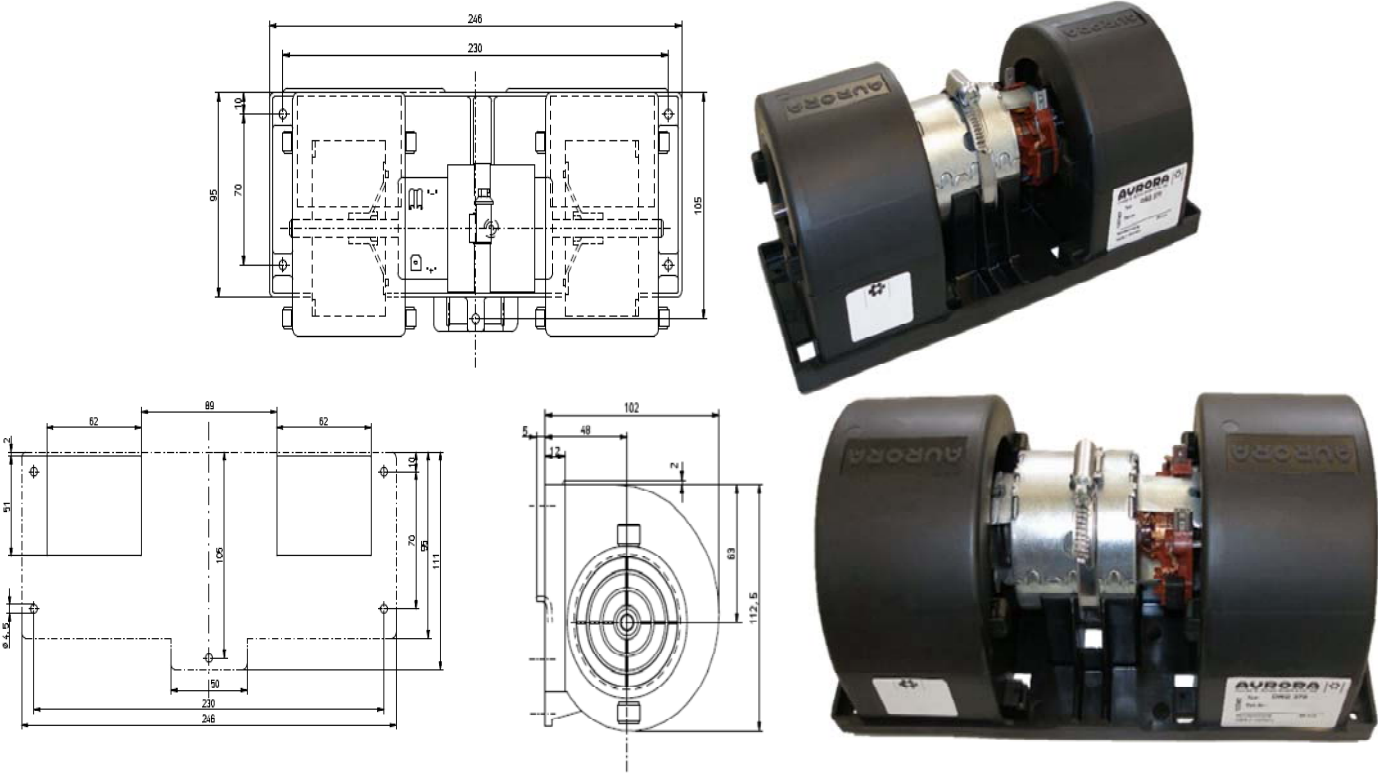
Specifications

Housing: 35% glass fiber polyamide PA6
Airflow: 370 m³/h (224 cfm)
Nominal voltage: 12 or 24 Volt
Weight: ~1.2 kg (2.65 lbs.)

Technical Information

912-100-0562

Variations	
Part Number	Description
131-101-0061	12V - Standard
131-101-0064	12V - 3 Speed
131-102-0061	24V - Standard
131-102-0064	24V - 3 Speed



Blowers DRG530

Aurora's Double Radial Blower (DRG) design incorporates high performance, low noise, and long life. The compact *DRG 530* design produces 530 m³/h of airflow and utilizes longer brushes and internal resistors extending the life of the blowers. Blower speeds are regulated via a series resistor thanks to ceramic heat sink and micro-temperature-fusing.

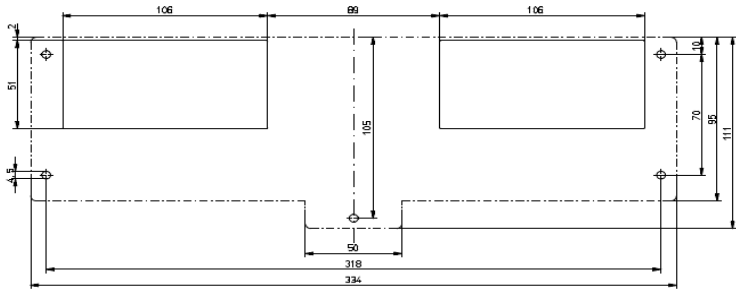
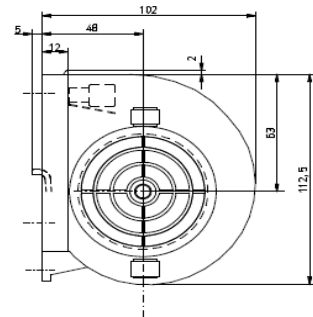
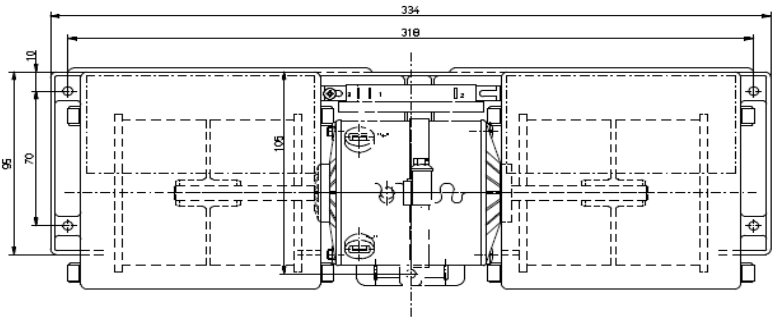
Specifications

Housing: 35% glass fiber polyamide PA6
Airflow: 530 m³/h
Nominal voltage: 12 or 24 Volt
Weight: ~1.25 kg (2.76 lbs.)

Technical Information

912-100-0550

Variations	
Part Number	Description
131-201-0011	12V - Standard
131-201-0020	12V - 3 Speed
131-202-0011	24V - Standard
131-202-0020	24V - 3 Speed



Blowers DRG730

Aurora's Double Radial Blower (DRG) design incorporates high performance, low noise, and long life. The compact DRG 730 design produces 730 m³/h of airflow and utilizes longer brushes and internal resistors extending the life of the blowers. Blower speeds are regulated via a series resistor with ceramic heat sink and micro-temperature-fusing. *Only available as replacement, not new projects.

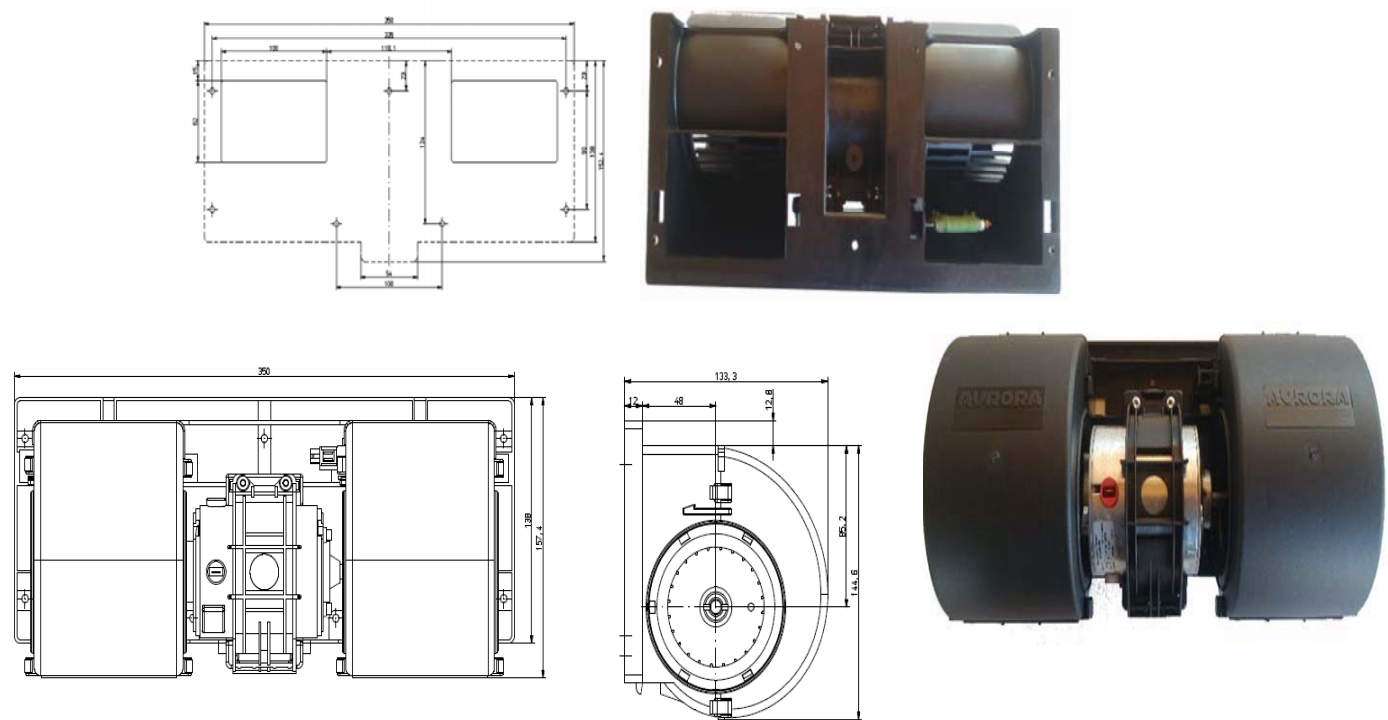
Specifications

Housing: 35% glass fiber polyamide PA6
Airflow: 730 m³/h
Nominal voltage: 12 or 24 Volt
Weight: ~1.75 kg (3.86 lbs)

Technical Information

912-100-0552

Variations	
Part Number	Description
131-301-00400	12V - Standard
131-301-00403	12V - 3 Speed
131-302-00400	24V - Standard
131-302-00403	24V - 3 Speed



Blowers DRG825

Aurora's Double Radial Blower (DRG) design incorporates high performance, low noise, and long life. The compact *DRG 825* design produces 825 m³/h (486 cfm) of airflow and utilizes longer brushes and internal resistors extending the life of the blowers. Blower speeds are regulated via a series resistor with ceramic heat sink and micro-temperature-fusing. *Only available as replacement, not new projects

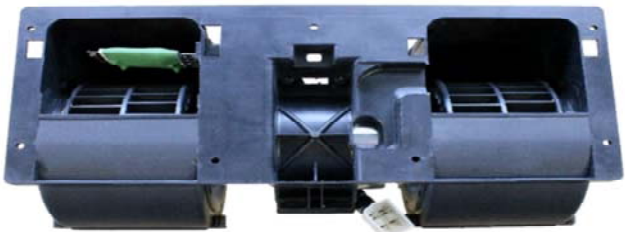
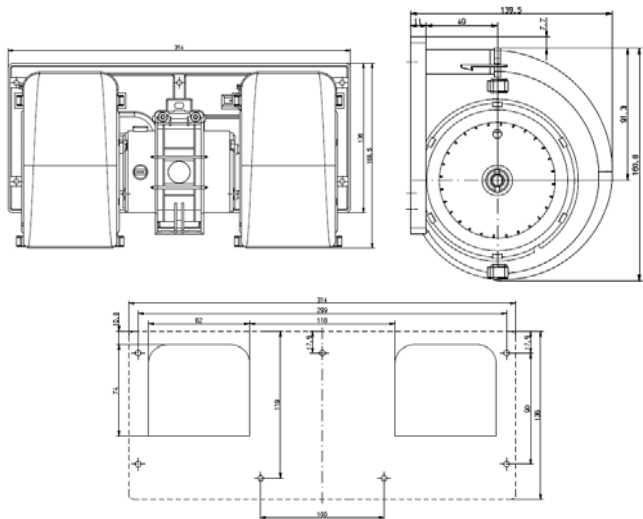
Specifications

Housing: 35% glass fiber polyamide PA6
Airflow: 825 m³/h (486 cfm)
Nominal voltage: 12 or 24 Volt
Weight: 1.8 kg

Technical Information

912-100-0599

Variations				
Part Number		Description		
131-401-0400		12V - Standard		
131-401-0450		12V – 4 Speed		
131-402-0400		24V - Standard		
131-402-0450		24V - 4 Speed		
Vair in m³/h Vair in cfm Pel in W Lp in dB(A)	Speed 1	Speed 2	Speed 3	Speed 4
	330	420	610	825
	194	247	359	486
	65	94	138	224
	56	63	67.5	74



Blowers DRG1150

This blower is built with a powerful electric motor for high efficiency over a long lifetime of performance. **Aurora's** Double Radial Blower contains a great air flow vs. system resistance proportion. Blower speeds via series resistor with ceramic heat sink and micro-temperature-fusing.

Specifications

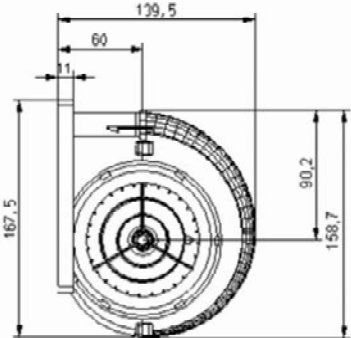
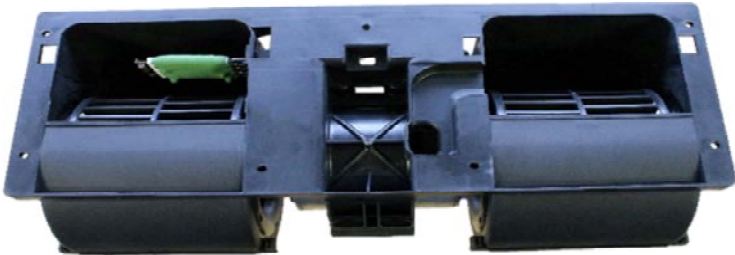
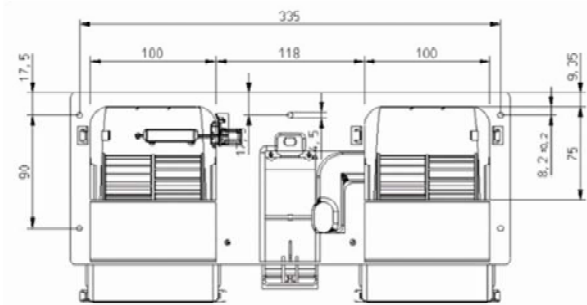
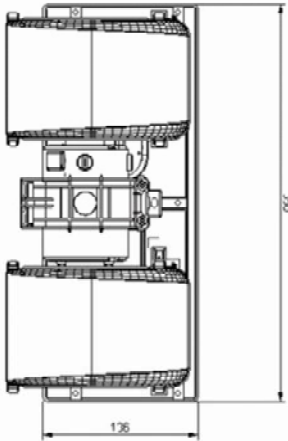
Housing: 35% glass fiber polyamide PA6
Airflow: 1150 m³/h (694 cfm)
Nominal voltage: 12 or 24 Volt
Weight: 2.35 kg (5.19 lbs.)

Technical Information

912-100-0577

Variations

Part Number	Description			
131-571-0400	12V - Standard			
131-571-0450	12V - 4 Speed			
131-572-0400	24V - Standard			
131-572-0450	24V - 4 Speed			
Vair in m³/h	Speed 1	Speed 2	Speed 3	Speed 4
Vair in cfm	480	600	790	1180
Pel in W	282	353	465	694
Lp in dB(A)	81	120	195	350
	59	65	67.5	76.5



Blowers DRG1200

AURORA's Double Radial Blower *DRG1200* is ideal for heating, AC, and ventilation. *DRG1200*s powerful electric motor has high efficiency and a long lifetime of performance. AURORA Double Radial Blowers contain a high air flow vs. system resistance proportion. Blower speeds are regulated via a series resistor with ceramic heat sink and micro-temperature-fusing. *Only available as replacement, not new projects

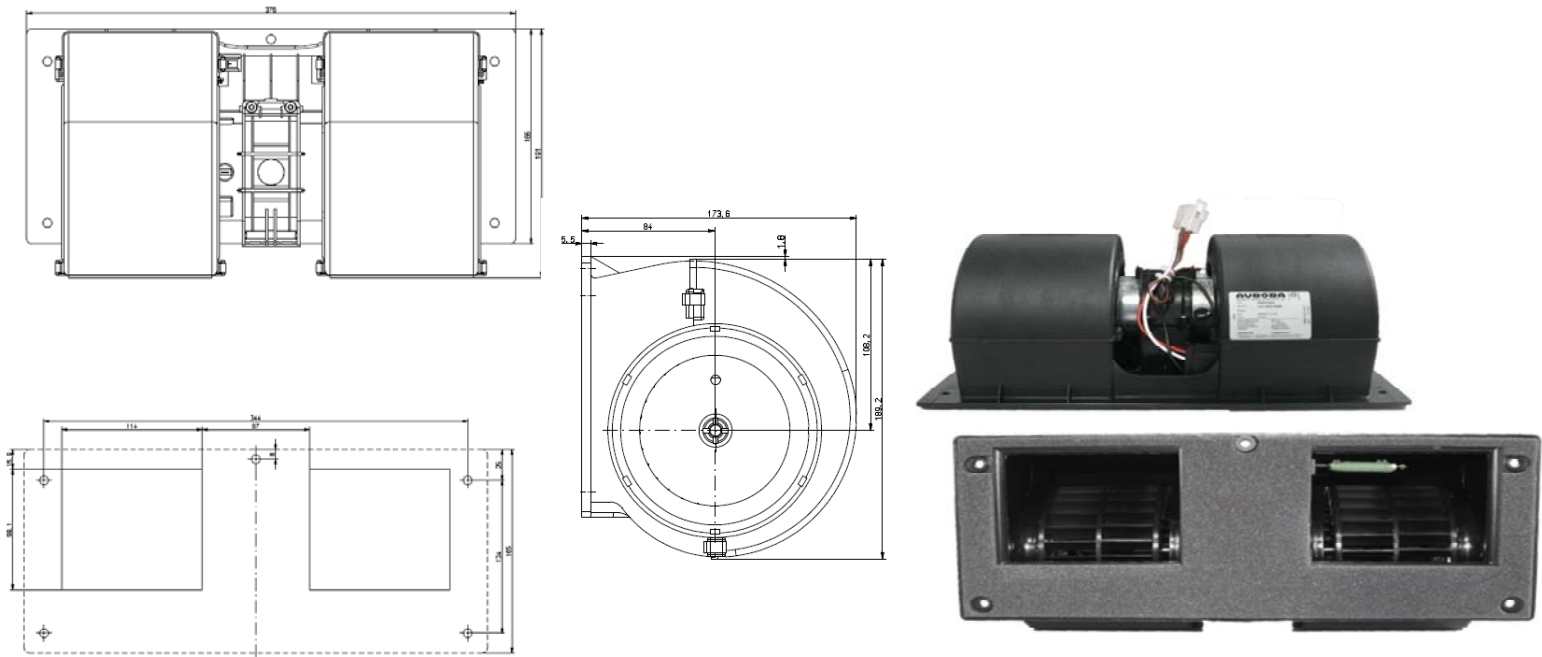
Specifications

Housing: 35% glass fiber polyamide PA6
Airflow: 1200 m³/h (736 cfm)
Nominal voltage: 12 or 24 Volt
Weight: ~2.54 kg (6 lbs.)

Technical Data

912-100-0578

Variations					
Part Number		Description			
131-601-0400		12V - Standard			
131-601-0403		12V - 3 Speed			
131-602-0400		24V - Standard			
131-602-0450		24V - 4 Speed			
	Speed 1	Speed 2	Speed 3	Speed 4	
	Vair in m³/h	470	675	800	1250
	Vair in cfm	277	397	471	736
	Pel in W	70	109	150	307
	Lp in dB(A)	56	63	68	77



Blowers DRG EC

The twin radial blower *DRG EC* is infinitely adjustable, satisfying to even the highest, most attune comfort standards. This blower also has a high lifetime of about 25,000 operation hours. The twin radial blowers are very efficient with low noise emission. Used exclusively for air flow distribution in heaters, air conditioning units, and ventilation units. The DRG EC is generally suitable for all mounting positions and consists of a plastic housing, two fan wheels and a brushless DC motor with dual ball bearings.

Specifications

Housing: 35% glass fiber polyamide PA6
Airflow: 1100 m³/h (224 cfm)
Nominal voltage: 12 or 24 Volt
Weight: ~2.5 kg (5.52 lbs.)

Technical Information

912-100-0330

Variations

Part Number	Description	
131-901-0001	12V - Standard	
131-902-0001	24V - Standard	
131-902-0028	24V - Standard	

	12V	24V
Vair in m³/h	1055	1100
Pel in W	280	370
Lp in dB(A)	67	73

