

# AURORA

Advanced HVAC Solutions



## WATER VALVES

MASTERS OF LIQUID FLOW

# Water Valves Mechanical Bowden Cable

Mechanical Water Valves control the heating performance via easy adjustable Bowden Cables. Standard connection diameters are Ø 16mm / 18mm / 22mm / 28mm. Varied connecting diameters are also available upon request. This water valve has mostly linear operating characteristics, and operates efficiently with a minimum pressure loss. The valve housing is comprised of Polyamide 66 Material, providing Aurora's line of water valves with lightweight and non-corrodible qualities.

## Specifications

**Flow medium:** water with antifreeze (mixture ratio max. 1:1)

**Volumetric flow:** 100-1.200 l/h

**Operating temperature range:** -40°C to +100°C fluid temp.

**Environmental temperature range:** -40°C to +85°C

**Nominal pressure of liquid:**

p = 1 bar relative Test pressure of the water valve: p1 = 2.5 bar absolute

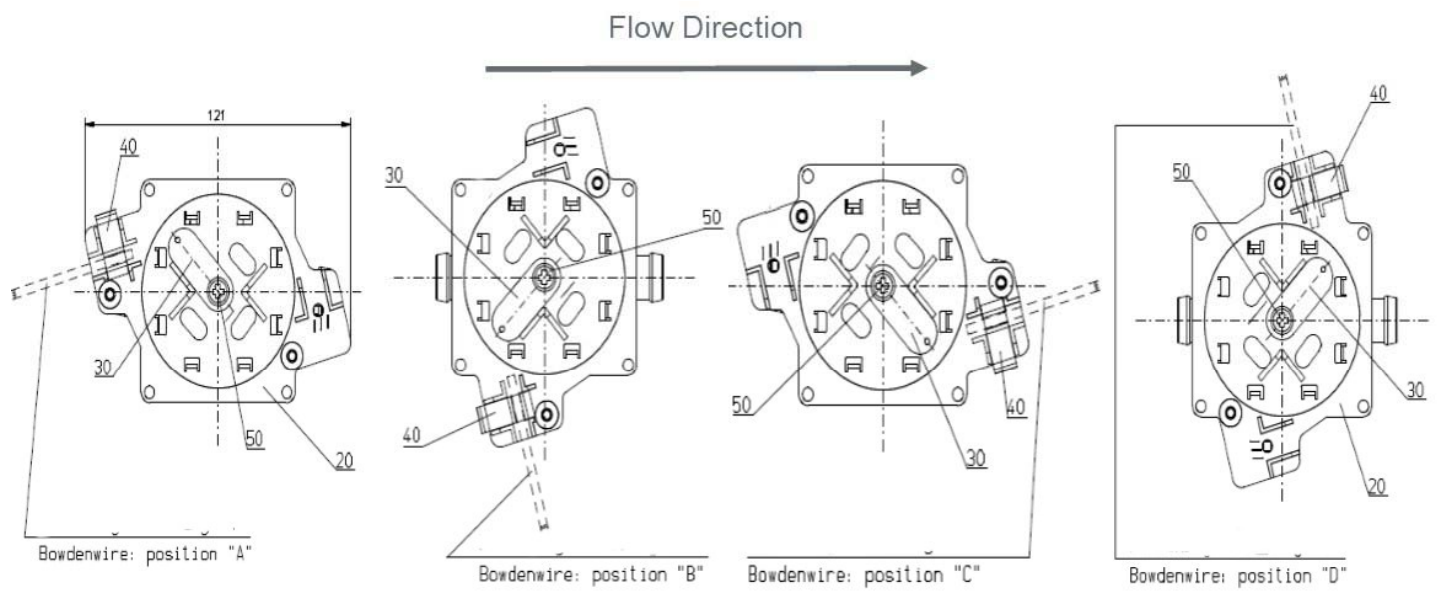
## Technical Information

912-100-0007

## Variations

Part Number	Description
381-000-0141	Ø16/16 with lever Bowden Wire Pos. A
381-000-0142	Ø16/16 with lever Bowden Wire Pos. B
381-000-0143	Ø16/16 with lever Bowden Wire Pos. C
381-000-0144	Ø16/16 with lever Bowden Wire Pos. D
381-000-0145	Ø22/22 with lever Bowden Wire Pos. A
381-000-0146	Ø22/22 with lever Bowden Wire Pos. B
381-000-0147	Ø22/22 with lever Bowden Wire Pos. C
381-000-0148	Ø22/22 with lever Bowden Wire Pos. D
381-000-0149	Ø28/28 with lever Bowden Wire Pos. A
381-000-0150	Ø28/28 with lever Bowden Wire Pos. B
381-000-0151	Ø28/28 with lever Bowden Wire Pos. C
381-000-0152	Ø28/28 with lever Bowden Wire Pos. D
381-000-0170	Ø18/18 with lever Bowden Wire Pos. A
381-000-0171	Ø18/18 with lever Bowden Wire Pos. B
381-000-0158	Ø18/18 with lever Bowden Wire Pos. C
381-000-0172	Ø18/18 with lever Bowden Wire Pos. D





# Water Valves 5 Pole with Servo Motor

Electrical Water Valve with Servo Motor 5 – Pole with varied diameters. Standard connection diameters are 16mm / 18mm / 22mm / 28mm. Control of this valve is steered by a 5-pole servo motor, providing easy adjustment of the heating performance. Varied connecting diameters are also available upon request. Servo Motors available in both 12 and 24 volts. This water valve has mostly linear operating characteristics, and operates efficiently with minimum pressure loss. The valve housing is comprised of Polyamide 66 Material, giving Aurora’s line of water valves with lightweight and non-corrodible qualities.

## Specifications

- Flow medium: water with antifreeze with mix ratio max. 1:1
- Volumetric flow: 100-1.200 l/h
- Operating temperature range: -40°C to +100°C fluid temperature
- Environmental temperature range: -40°C to +85°C
- Nominal pressure of the fluid: p = 1 bar relative
- Test pressure of the water valve p1 = 2.5 bar absolute

## Technical Information

912-100-0007/421

Variations		
Part Number	Diameter Ø	Voltage (V)
381-000-0300	16/16	24
381-000-0350	16/16	12
381-000-0302	22/22	24
381-000-0352	22/22	12
381-000-0304	28/28	24
381-000-0354	28/28	12
381-000-0390	18/18	12
381-000-0339	18/18	24



