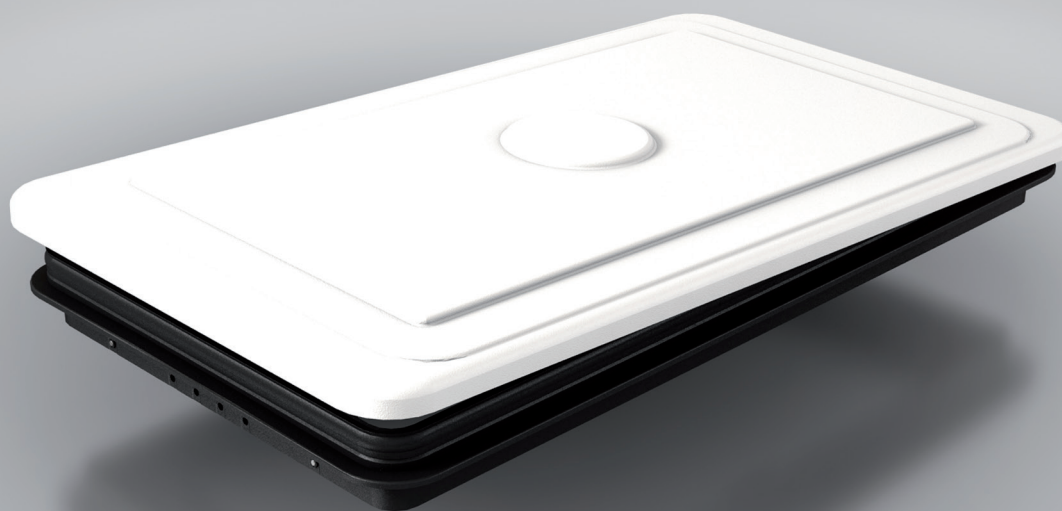


# 73/99

## BOTOLA

### ROOF HATCH



#### CARATTERISTICHE STANDARD

- Applicazione: Aerazione;
- Dispositivi di apertura: 2 azionamenti elettrici (12/24V);
- Dimensioni d'ingombro telaio 970x530 mm;
- Coperchio in ABS termoformato;
- Telaio di fissaggio in materiale plastico PA con inserti metallici;
- Chiusura automatica a estrazione chiave di accensione;
- Omologazione 2009/19/CE (CEM);
- Omologazione 95/28/CE.

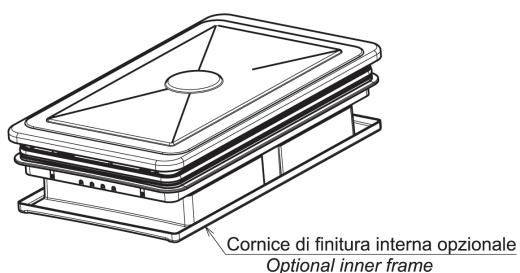
#### STANDARD FEATURES

- Application: Ventilation;
- Opening device: 2 motors (12/24V);
- Roof aperture 970x530 mm;
- Dome in thermoformed ABS;
- Assembly frame in plastic materials and steel inserts;
- Automatic closing at engine stop;
- Homologated according to 2009/19/CE (EMC);
- Homologated according to 95/28/CE.

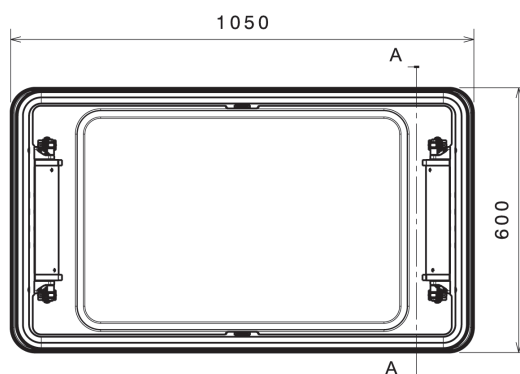
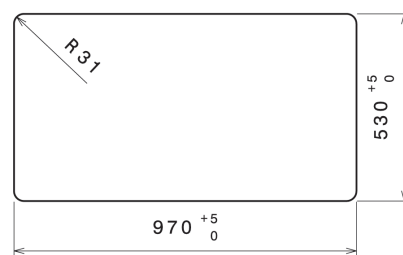




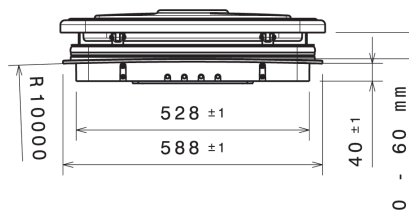
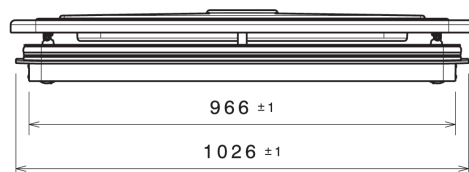
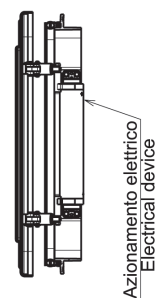
**SCARICA LA SCHEDA TECNICA**  
DATASHEET DOWNLOAD



**DIMENSIONI SEDE PER BOTOLA**  
Size for hatch housing



A-A



LAM S.p.A.  
Via Guido Rossa, 4 - 41057 Spilamberto (MO) - Italy  
Tel. +39 059 784392 - Fax +39 059 8638048  
[www.lamspa.it](http://www.lamspa.it)

ISO 9001:2015  
IATF 16949:2016

