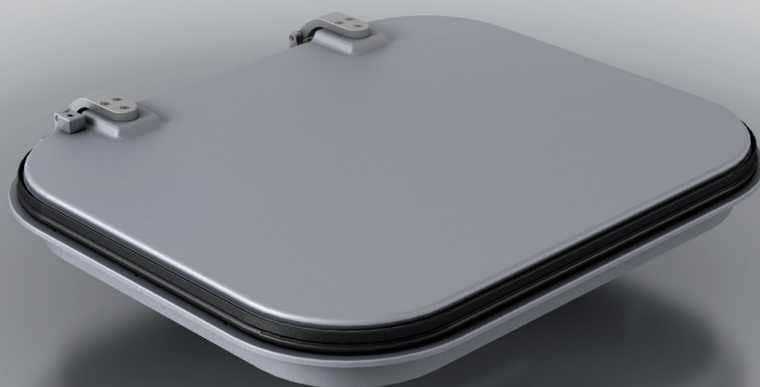


# 41/94

## BOTOLA

### ROOF HATCH



#### CARATTERISTICHE STANDARD

- Applicazione: Passo d'uomo;
- Dispositivi di apertura: cerniere esterne per apertura a 90° con molla a gas;
- Doppia serratura di sicurezza con chiave;
- Dimensioni d'ingombro telaio 615x515 mm;
- Coperchio in fusione di alluminio;
- Telaio di fissaggio in alluminio anodizzato.

#### STANDARD FEATURES

- Application: Crawl Space;
- Opening device: External hinges for dome tilting at 90° with gas spring;
- Double security seal locks;
- Roof-aperture for assembly frame: 615x515 mm;
- Dome in cast aluminum;
- Assembly frame in anodized aluminum.

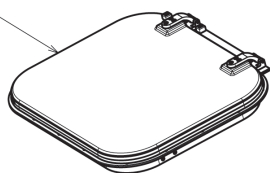




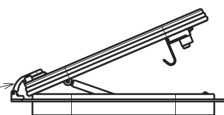
**SCARICA LA SCHEDA TECNICA**  
DATASHEET DOWNLOAD



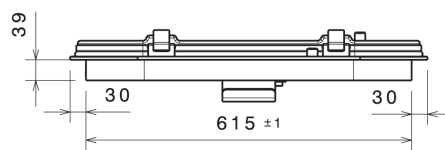
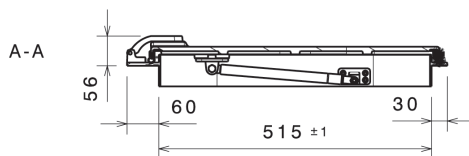
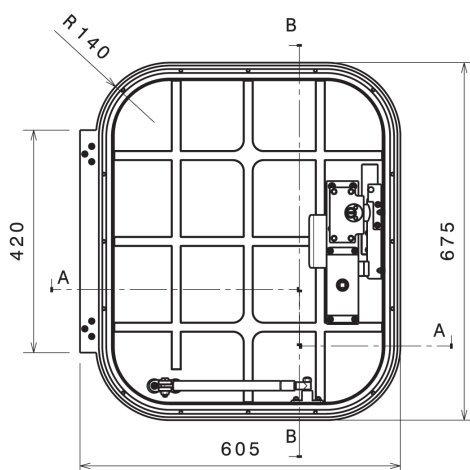
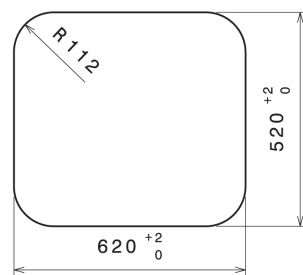
Coperchio in fusione di alluminio  
Dome in cast aluminum



Cerniere per apertura a 90°  
Hinges for tilting at 90°



**DIMENSIONI SEDE PER BOTOLA**  
Size for hatch housing



LAM S.p.A.  
Via Guido Rossa, 4 - 41057 Spilamberto (MO) - Italy  
Tel. +39 059 784392 - Fax +39 059 8638048  
[www.lamspa.it](http://www.lamspa.it)

ISO 9001:2015  
IATF 16949:2016

