

Description

Two pole rocker switch/thermal-magnetic circuit breaker with trip-free mechanism (S-type TM CBE to EN 60934). The addition of a magnetic tripping module to the type 3120 range described in catalogue section Thermal Overcurrent Circuit Breakers extends the choices available (thermal-magnetic protection in pole 1, thermal or no protection in pole 2). All are offered with rocker switch or push button control - two buttons for ON/OFF or one button press-to-reset only, in designs to suit one of three different panel cut-out sizes. Illumination is optional. Approved to CBE standard EN 60934 (IEC 60934).

Meets the requirements regarding fire resistance of EN 60335-1: 2007-02 Safety of household and similar electrical appliances.

Typical applications

Motors, machine tools, office equipment, appliances.

Standard current ratings and typical internal resistance values

Current ratings (A)	Internal resistance per pole (Ω)	
	thermal-magnetic	thermal
0.1	165	94
0.2	42.5	24
0.3	20.2	12
0.4	9.7	5.40
0.5	7.17	4.30
0.6	4.9	3
0.8	2.65	1.50
1	1.49	0.9
1.2	1.25	0.7
1.5	0.74	0.45
2	0.49	0.29
2.5	0.20	0.0785
3	0.14	0.0595
3.5	0.114	0.0565
4	0.092	0.0435
5	0.06	0.0325
6	0.043	0.0215
7	0.030	0.0215
8	0.029	0.02
10	0.021	0.02
12	< 0.02	< 0.02
14	< 0.02	< 0.02
15	< 0.02	< 0.02
16	< 0.02	< 0.02



3120-...-M...

Technical data

For further details please see chapter: Technical Information

Voltage rating	AC 240 V (50/60 Hz); DC 50 V	
Current ratings	0.1...16 A	
Typical life	0.1...16 A 50,000 operations at 1 x I_N , ind.	
Ambient temperature	-30...+60 °C (-22...+140 °F)	
Insulation co-ordination (IEC 60664 and 60664 A)	rated impulse withstand voltage	pollution degree 2
	2.5 kV	
	reinforced insulation in operating area	

Dielectric strength (IEC 60664 and 60664A)	test voltage	
	operating area	AC 3,000 V
	current path/current path	AC 1,500 V
Insulation resistance	> 100 M Ω (DC 500 V)	
Interrupting capacity I_{cn}	AC 0.1...2 A 100 x I_N	
	AC 2.5...16 A 250 A	
	DC 0.1...16 A 10 x I_N	

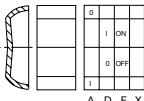
Interrupting capacity (UL 1077)		
I_N	U_N	I_{nc}
0.1...10 A	AC 250 V	2,000 A
0.1...16 A	DC 125 V	1,000 A

Degree of protection (IEC 60529/DIN 40050)	operating area IP40 (with water splash protection IP54)	
	terminal area IP00	
Vibration	8 g (57-500 Hz) \pm 0.61 mm (10-57 Hz) to IEC 60068-2-6, test Fc 10 frequency cycles/axis	
Shock	30 g (11 ms) to IEC 60068-2-27, test Ea	
Corrosion	96 hours at 5 % salt mist to IEC 60068-2-11, test Ka	
Humidity	240 hours at 95 % RH to IEC 60068-2-78, test Cab	
Mass	approx. 53 g (2-pole)	
	approx. 50 g (1-pole)	

Illumination voltage / Power consumption

Operating voltage	Power consumption		
	Y	R	G
230 V	2.2 mA	0.9 mA	0.9 mA

Ordering information 3120 with rocker switch

Type									
3120 thermal-magnetic circuit breaker									
Mounting									
F snap-in frame									
Size of frame									
3 Standard, to fit in cut-out 50.5 x 21.5 mm panel thickness 1 - 6.35 mm (.039-.250 in)									
5 Standard, to fit in cut-out 44.5 x 22 mm panel thickness 1 - 4 mm (.039-.157 in)									
7 Design, to fit in cut-out 45 x 22 mm panel thickness 1 - 4 mm (.039-.157 in)									
Number of poles									
2 2-pole switching and 2-pole protected (pole 1: thermal- magnetically protected, pole 2: thermally protected)									
5 2-pole switching and 1pole thermal-magnetically protected									
Mounting frame design									
1 collar height 1 mm (.039 in)									
3 collar height 9 mm (.354 in)									
4 collar height 2 mm (.079 in) with water splash protection (IP54)									
Mounting frame design (F7)									
R black									
T black with snap-on splash cover									
Terminal configuration									
P7 all 4 terminals 12(k), 22(k), 11, 21 blade terminals 2x2.8-0.8									
H7 12(k), 22 (k): blade terminals 2x2.8-0.8 11, 21: terminal screws M3.5, blade terminals 2x2.8-0.8									
G7 as H7, but terminals 12(i) and 22(i) are blade terminals 2x2.8-0.8 (shunt terminal)									
Characteristic curve									
M1 standard delay, therm. 1.01-1.4 x I _N ; magn. 4-9 x I _N AC									
Switch style									
W standard rocker (F3 & F5)									
A specially designed rocker (F7)									
Colour and illumination									
01 . rocker black opaque without illumination									
02 . rocker white opaque without illumination									
04 . rocker red opaque without illumination									
14 . R rocker red translucent with LED-illumination									
15 . Y rocker orange translucent with LED-illumination									
19 . G rocker green translucent with LED-illumination									
Rocker markings for F3 and F5									
<div><div><div>A</div><div>D</div><div>F</div><div>Q</div><div>X</div></div><div></div><div>Q: as D, but moulded in X: without illumination</div></div>									
Rocker markings for F7									
Q I« and »O« moulded in									
Illumination voltage range									
1 10 - 14 V DC									
2 20 - 28 V DC									
3 90 - 140 V AC									
4 185 - 275 V AC									
Current ratings									
0,1...16 A									
3120 - F 3 2 1 - P7 M1-W 14 A R 4 - 10 A ordering example									

The exact part number required can be built up from the table of choices shown above. Ordering references for optional features should be omitted if not required.

Ordering information 3120 with push buttons

Type									
3120 thermal-magnetic circuit breaker									
Mounting									
F snap-in frame									
Size of frame									
3 to fit in cut-out 50.5 x 21.5 mm panel thickness 1 - 6.35 mm									
Number of poles									
2 2-pole switching and 2-pole protected (pole 1: thermal-magnetically protected, pole 2: thermally protected)									
5 2-pole switching and 1pole thermal-magnetically protected									
Mounting frame design									
F frame with two push buttons									
G frame with one push button									
Terminal configuration									
P7 all 4 terminals 12(k), 22(k), 11, 21 blade terminals 2x2.8-0.8									
H7 12(k), 22 (k): blade terminals 2x2.8-0.8 11, 21: terminal screws M3.5, blade terminals 2x2.8-0.8									
Characteristic curve									
M1 standard delay, therm. 1.01-1.4 x I _N ; magn. 4-9 x I _N AC									
Actuator style / colour / illumination									
D 01X 1 push button* black opaque without illumination									
D 02X 1 push button* white opaque without illumination									
D 04X 1 push button* red opaque without illumination									
D 19XG 1 push button* green translucent with LED-illumination									
SGRX 2 push buttons green/red opaque without illumination									
SGRXG 2 push buttons green/red translucent with LED-illumination									
Illumination voltage range									
1 10 - 14 V DC									
2 20 - 28 V DC									
3 90 - 140 V AC									
4 185 - 275 V AC									
Current ratings									
0.1...16 A									
3120 - F 3 2 F - P7 M1 - SGRXG 4 - 10 A ordering example									

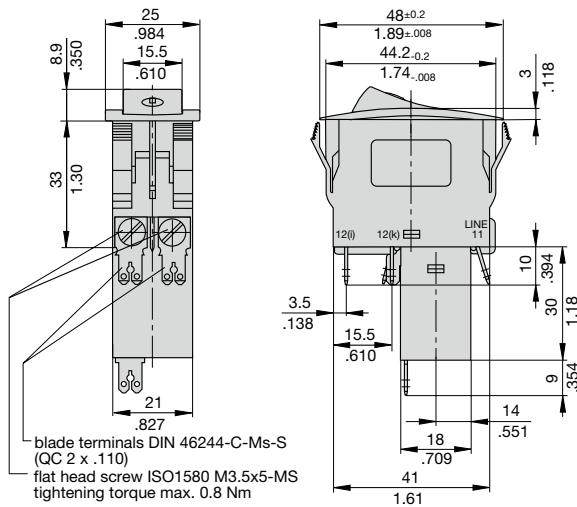
*Reset only
Other push button colours upon request

Approvals

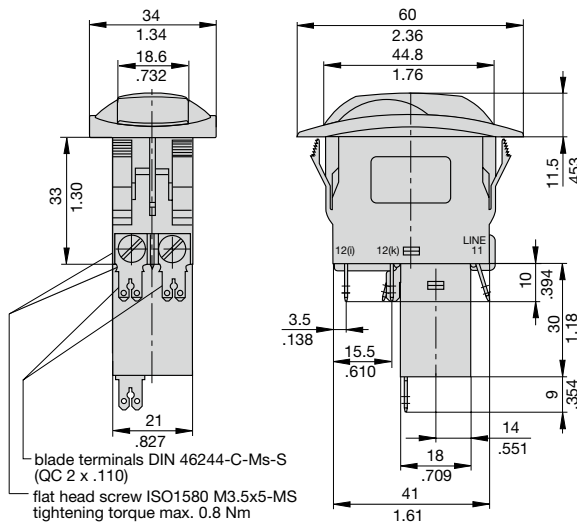
Authority	Standard	Rated voltage	Current ratings
VDE	IEC / EN 60934	AC 240 V DC 50 V	0.1...16 A 0.1...16 A
UL	UL 1077	AC 250 V AC 125 V	0.1...10 A 0.1...16 A
CSA	C22.2 No 235	AC 250 V DC 125 V	0.1...10 A 0.1...14 A
CQC (CCC)	GB 17701	AC 240 V DC 50 V	0.1...16 A 0.1...16 A

Dimensions

Mounting style -F7.R

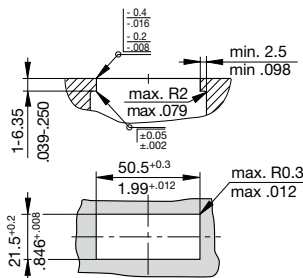


Mounting style -F7.T

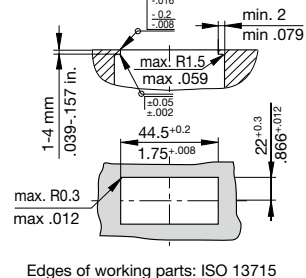


Cut-out dimensions

Cut-out for mounting style -F3 with rocker and push button

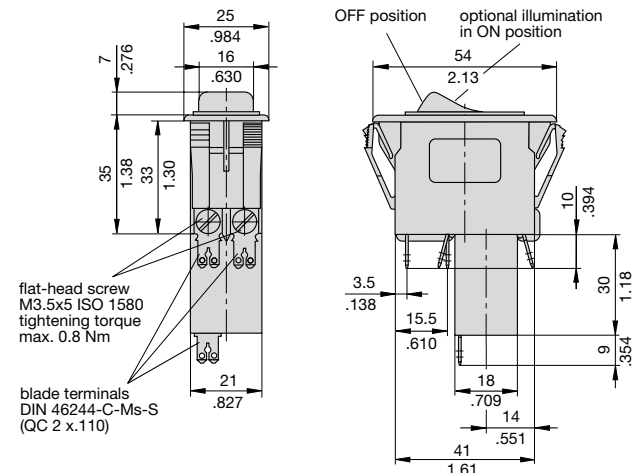


Cut-out for mounting style -F5 with rocker



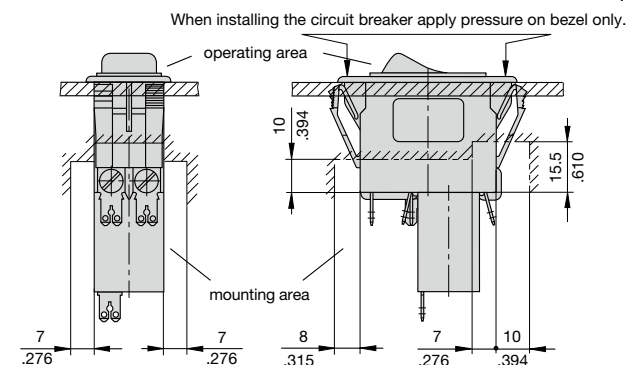
Dimensions

Mounting style -F3.1, with rocker – Collar height 1 mm



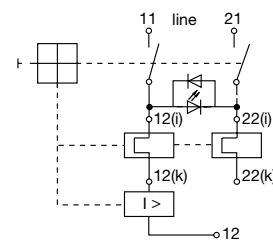
Installation drawing

Required safety distances for rocker and push button

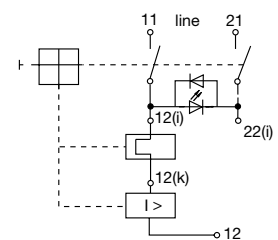


Internal connection diagrams

therm.-magn. protection on one pole thermally protected on the other pole

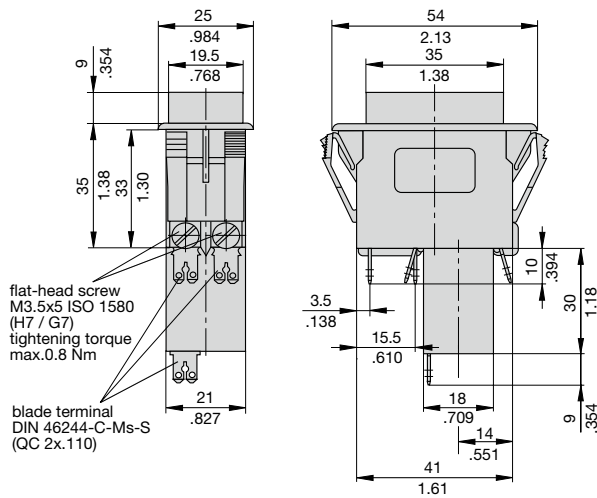


therm.-magn. protection on one pole unprotected on the other pole

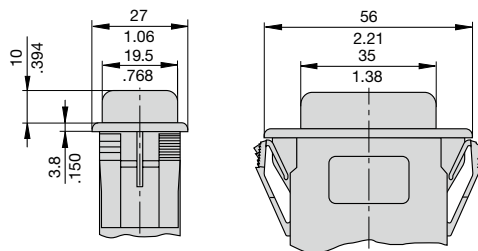


Mounting frame variants

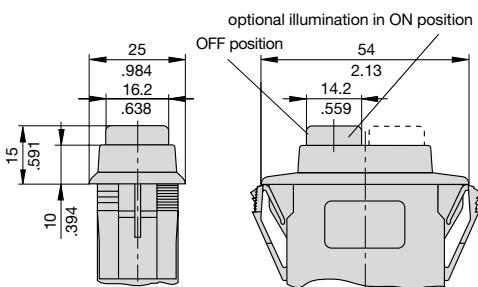
Mounting style F3.3 with rocker
collar height 9 mm (.354 in.)



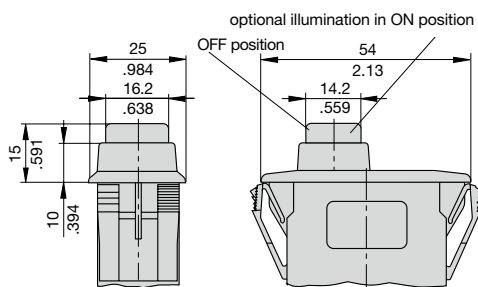
Mounting style F3.4 with rocker
collar height 2 mm (.079 in.), with water splash protection



Mounting style F3.F-...-S-...
with 2 push buttons



Mounting style F3.G-...-D-...
with 1 push button



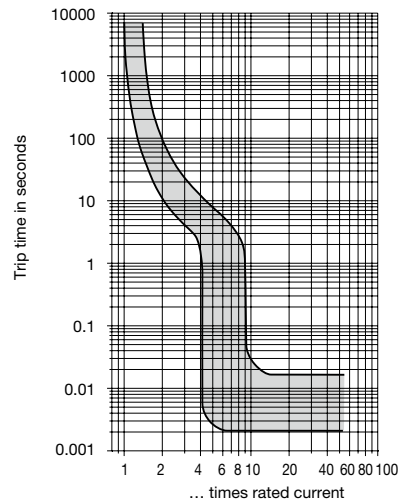
For mounting styles -F2., -F5., -F6.. please see
section Thermal Overcurrent Circuit Breakers.

Typical time/current characteristics at +23°C/+73.4°F

Single or double pole load

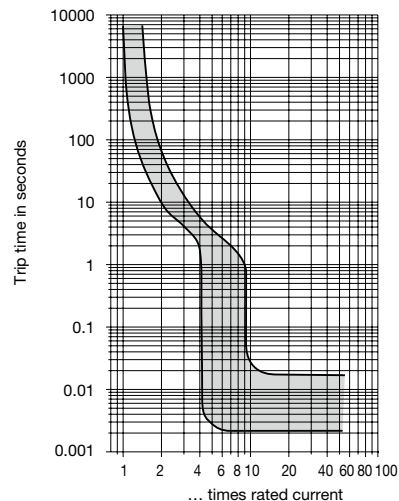
0.1...2 A

AC/DC ¹⁾



2.5...16 A

AC/DC ¹⁾



¹⁾ Magnetic tripping currents are increased by 25% on DC supplies.

The time/current characteristic curve depends on the ambient temperature prevailing. In order to eliminate nuisance tripping, please multiply the circuit breaker current ratings by the derating factor shown below. See also section Technical information.

Ambient temperature	°F	-22	-4	+14	+32	+73.4	+104	+122	+140
	°C	-30	-20	-10	0	+23	+40	+50	+60
Derating factor		0.8	0.76	0.84	0.92	1	1.08	1.16	1.24

Insulated cover
Y 303 068 01

Spacer for 3120-F3...
Y 303 675 01/02

Spacer for 3120-F5...
Y 303 676 01

* Y 303 675 01 suitable for panel thickness < 2 mm (.079 in)
* Y 303 675 02 suitable for panel thickness < 4 mm (.157 in)

Blanking piece in -F3... size mounting frame
Y 303 885 31

Separate water splash cover, transparent (IP66)
for use with -F5.. size mounting frames
X 221 619 01

All dimensions without tolerances are for reference only. In the interest of improved design, performance and cost effectiveness the right to make changes in these specifications without notice is reserved. Product markings may not be exactly as the ordering codes. Errors and omissions excepted.

